

LUXRIOT EVO

User Guide

October 18, 2016

© A&H Software House, Inc.

Luxriot EVO Monitor User Guide

Table of Contents

1.	Interface Overview	3
2.	Interface Elements	4-5
3.	About	6
4.	License Limitations	7
5.	Server Connections	8-10
6.	Application Settings	11-17
7.	Live View Section	18-20
8.	Viewport Overlay	21-24
9.	Substreams	25
10.	Channels	26
11.	PTZ	27-30
12.	Digital PTZ and Dewarp	31-32
13.	Instant Playback	33-34
14.	Audio	35-36
15.	Layouts	37-40
16.	Layout Sequences	41-42
17.	Motion Overlay	43
18.	Maps	44
19.	User Buttons	45
20.	Video Wall	46-47
21.	Playback (Archive) Mode	48-50
22.	Sequence	51-54
23.	Smart Search	55-58
24.	Bookmarks	59-63
25.	Alerts	64
26.	Video & Snapshot Export	65
27.	Library Section	66
28.	Multimonitor Setup	67
29.	Keyboards & Joysticks	68-69
30.	Operation Modes	70

31. [External Services](#)

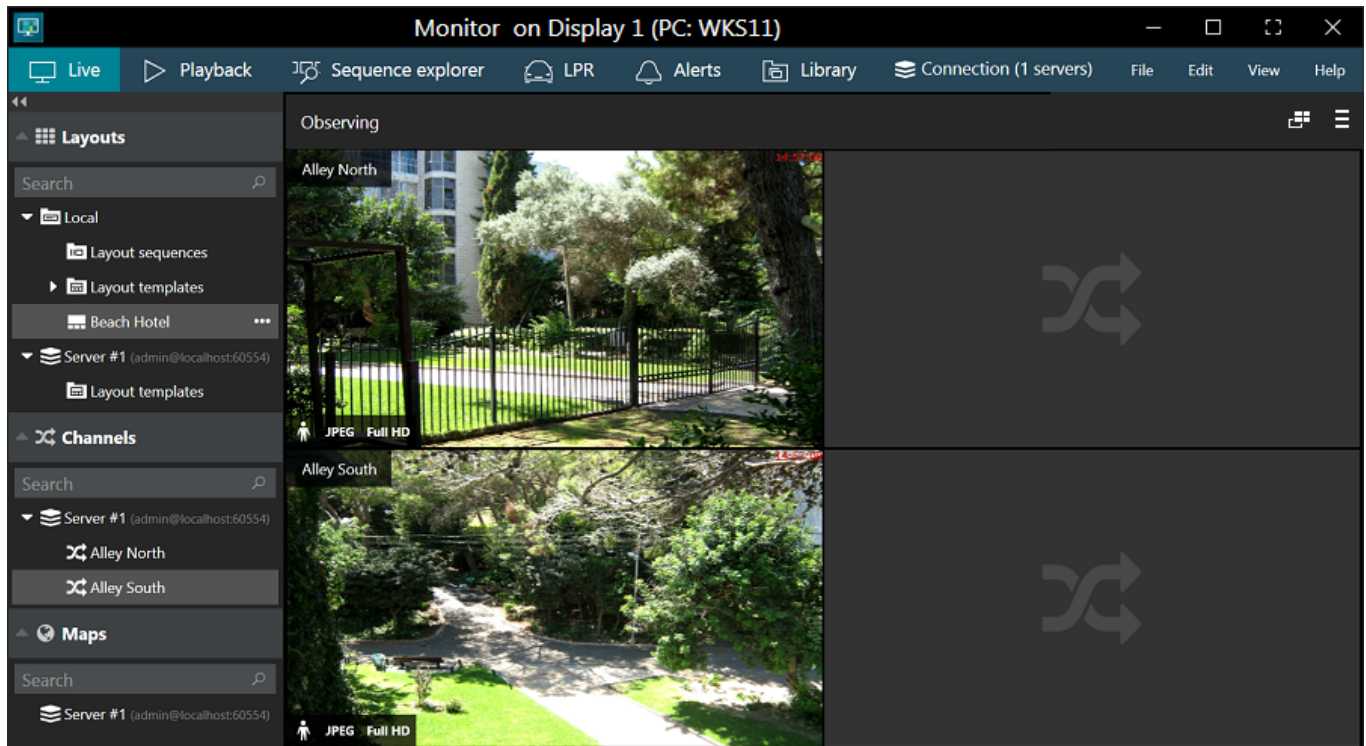
71-73

Luxriot EVO Monitor User Guide

1 Interface Overview

Luxriot Monitor is a dedicated interface for viewing live and recorded contents of connected Luxriot servers; it also includes advanced features such as video and snapshot export, alert monitoring, PTZ and digital PTZ control, among others.

We recommend that end users and CCTV station operators become acquainted with this document in order to understand application interface and work out some personal usage strategies.



The Luxriot Monitor application window title displays [window name](#), display number, computer station name, and also video wall title and display number.

Upper panel - tabs

The upper panel contains tabs that allow you to quickly switch between the main software functionalities.

Upper right: main menu

This section contains the main application menu items.

Left menu

This section displays resources from connected servers: layouts, channels, maps and configured servers.

Main window

Main window displays contents provided by server, which depend on the tab selected.

Please refer to the [Interface Elements](#) section of this document for detailed information about all Luxriot Monitor panels, buttons and other controls.

Luxriot EVO Monitor User Guide

2 Interface Elements

This topic covers Luxriot Monitor interface elements in more details.

Upper right corner - window controls

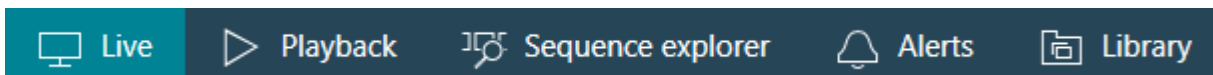


From this panel, the Luxriot Monitor application window can be:

- opened in fullscreen mode
- minimized to taskbar
- maximised/restored to default size
- closed

To enter fullscreen, F11 can also be used; to exit fullscreen mode, press *Escape* or *F11* on the keyboard.

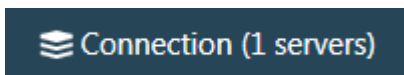
Upper panel - tabs



The upper panel contains tabs that allow you to quickly switch between main software functionality. The following tabs may be available, depending on the software version:

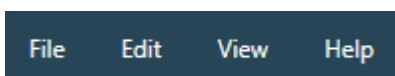
- **Live:** real-time video
- **Playback:** recorded video
- **Sequence Explorer:** recorded video analysis
- **Alerts:** generated alerts
- **Library:** exported video and snapshots

Upper panel - server connections



The *Connection* button opens server connection setup window and also displays the number of currently configured servers.

Upper right: main menu

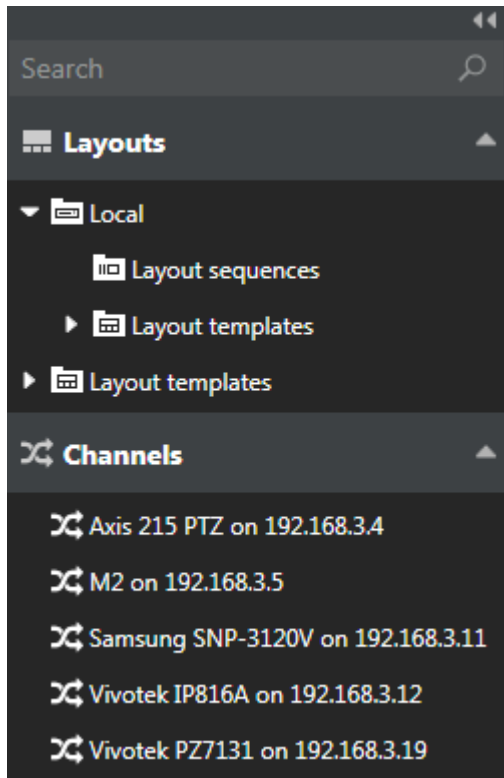


This section contains the main application menu items.

- **File**
 - *Exit:* close the Luxriot Monitor application
- **Edit**
 - *Settings:* [application settings](#)
- **View:** [operation modes](#)
 - *Always on top*
 - *Exclusivity mode*
 - *Locked application*
- **Help**
 - *About:* about Luxriot Monitor

Luxriot EVO Monitor User Guide

Left menu - resources



This section displays resources from the connected servers: layouts, channels and maps loaded from configured servers. If visual grouping has been configured for the target server, the resources will be arranged into expandable lists.

The panel can be docked to the left by pressing the << arrows in the upper part of the panel, and restored back by clicking the >> arrows; individual resource lists can also be collapsed and restored by clicking the subsection name. *Search* field in the upper panel part allows you to filter the resources based on the entered text.

- **Search:** global resource search
- **Layouts and layout templates**
 - Local resources: stored on Luxriot Monitor machine
 - Server resources: loaded from connected server(s)
- **Channels:** per server or mixed, if *Merge resources* option has been enabled in the [server connection](#) properties
- **Maps***
- **User Buttons***

*Some resources may be unavailable for certain software editions.

Main window

The main window displays content provided by the server, which depend upon the selected tab. Please see the corresponding sections of this document for detailed information about each mode.

Luxriot EVO Monitor User Guide

3 About

Information about currently running software can be viewed using the local computer in following way: in Luxriot Monitor, go to the main menu, click Help and select *About*.



4 License Limitations

Please note that, as Luxriot EVO Monitor application is a single interface for all Luxriot EVO editions, some features described further may not be available in certain Luxriot EVO versions.

When the Luxriot Monitor is connected to a server that is operating with a free license, the following limitations apply:

- the maximum video stream resolution is Full HD (1080p)
- each Luxriot Monitor application can be connected to a single free server at a time
- each free server can have no more than one simultaneous Luxriot Monitor connection
- some types of the resources will be not available (e.g., video wall, maps)

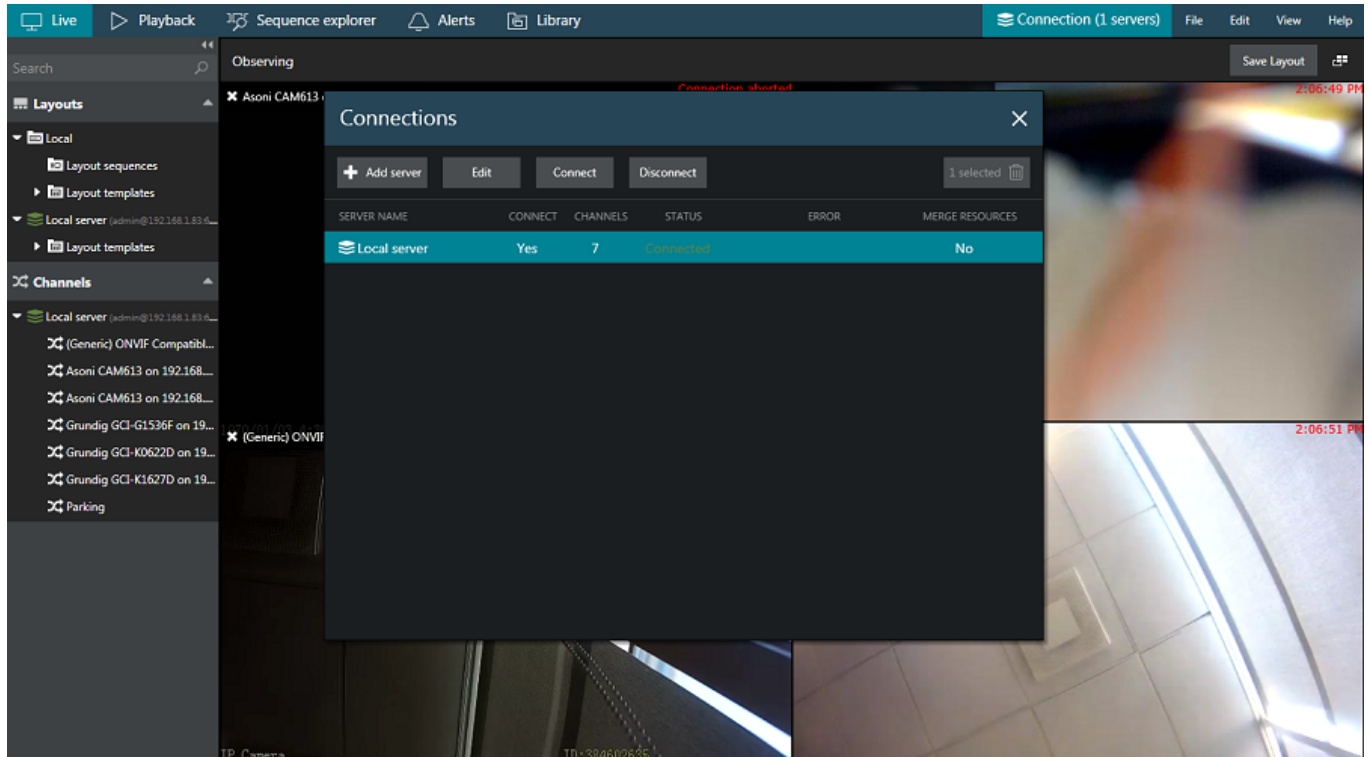
Luxriot EVO Monitor User Guide

5 Server Connections

The Luxriot EVO software edition allows a maximum of 1 (one) simultaneous connection to the server; Luxriot Monitor can also only be connected to one Luxriot EVO server at once.

Luxriot Monitor application contains local server connection by default. If you wish to connect to a remote server, follow the steps below.

Select the *Connection* section in the upper panel to bring up the dialog box.



Click the *Remove* button in the upper-right-hand corner to delete the existing (which, by default, is the local one) server connection. Click the + *Add server* button to create a new server connection and fill the connection parameters.

Luxriot EVO Monitor User Guide

Connections

Server title

Section 31

IP address and port

localhost : 60554

Server host name or network IP address and port. (Default port is 60554)

User name

admin

User password

...

☐ Merge resources

Server resources will be merged with other similar servers' resources and shown in the same branches.


Save

Cancel


The table below contains details about the available parameters.

Setting	Description	Default value
Server Title	User-defined server name	Server #N
Server IP Address	Local/Internet IP address or host name of the target server	localhost
Server Port	TCP port for remote connection	60554
User Name	User account name for remote connection	admin
User Password	Password for the provided user profile provided	[empty]
Multicast Mode	Accept multicast streams from the target server	Disabled
Merge Resources	Do not display the source server for accessed resources; shuffle server resources (for multiple servers)	Disabled

Click **Save** when you have finished. The server connection created will appear in the item list and Luxriot Monitor will attempt to establish the connection immediately.

 For you to be able to use the multicast mode, it must be enabled on the server side via Luxriot EVO Console. Also, multicast traffic must be allowed on all the network equipment on the way from your server to the Luxriot EVO Monitor.

Luxriot EVO Monitor User Guide

Connections ×					
<div><div><div>+</div><div>Add server</div></div><div>Edit</div><div>Connect</div><div>Disconnect</div></div>					
SERVER NAME	CONNECT	CHANNELS	STATUS	ERROR	MERGE RESOURCES
 Section 31	Yes	7	Connected		No

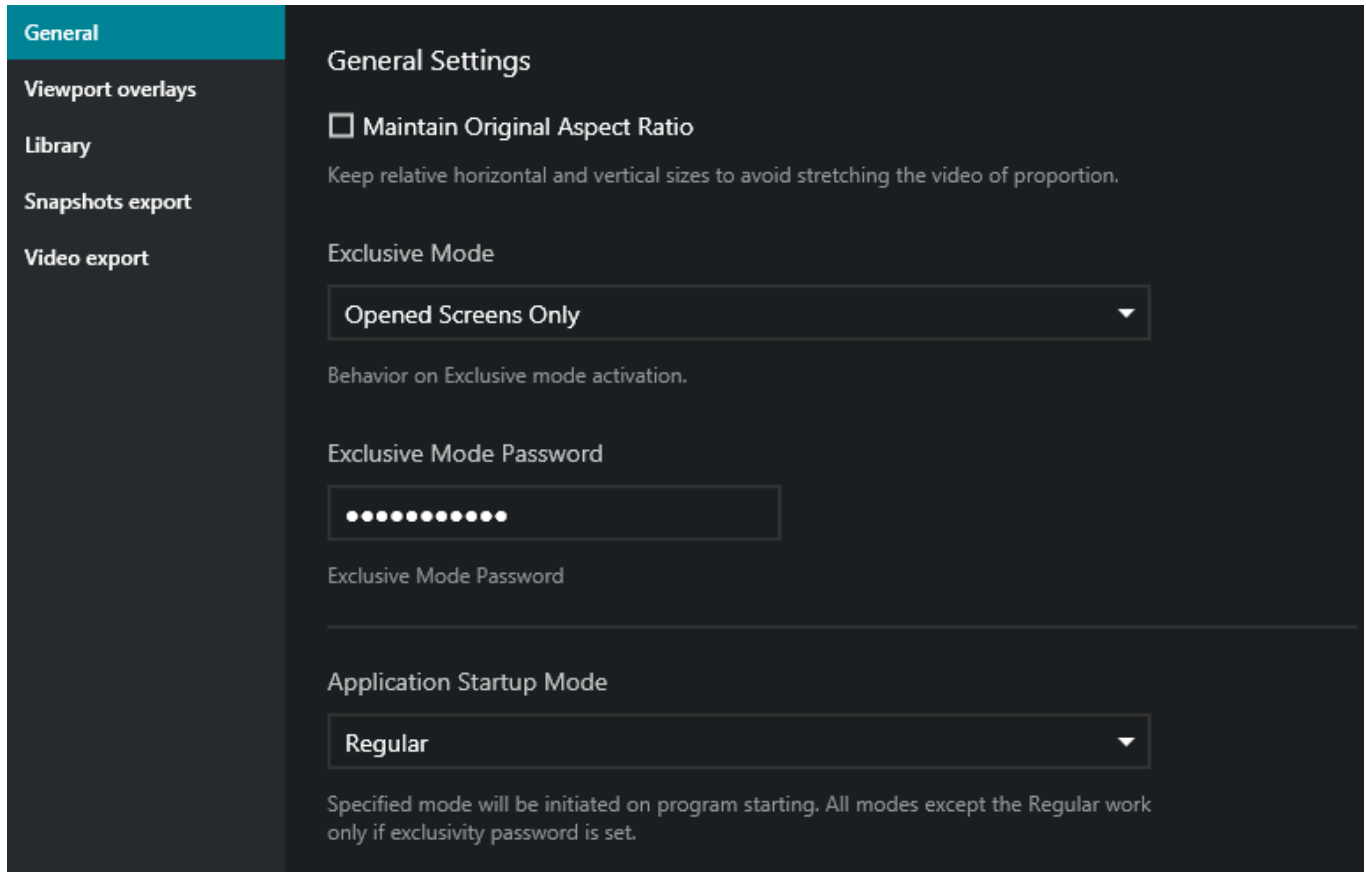
Select a server by clicking it in the item list and click *Connect* in order to (re-)establish a connection with the selected server. Server resources will automatically appear in the left hand panel.

Click *Disconnect* in this same dialog box to log out from the selected server.

6 Application Settings

Application settings are reachable via the main menu by clicking *Edit -> Settings*, and these cover all configurable options of the program GUI. Note that parameters here are defined for the whole application and cannot be set separately for application instances and/or individual layouts, channels etc.

General



The screenshot shows the 'General Settings' window of the Luxriot EVO Monitor application. On the left is a dark sidebar with a teal header 'General' and four menu items: 'Viewport overlays', 'Library', 'Snapshots export', and 'Video export'. The main area has a dark background and contains the following settings:

- General Settings**
 - ☐ **Maintain Original Aspect Ratio**
Keep relative horizontal and vertical sizes to avoid stretching the video of proportion.
- Exclusive Mode**
 - A dropdown menu showing 'Opened Screens Only' with a downward arrow.
 - Behavior on Exclusive mode activation.
- Exclusive Mode Password**
 - A password input field with 10 dots.
 - Exclusive Mode Password
- Application Startup Mode**
 - A dropdown menu showing 'Regular' with a downward arrow.
 - Specified mode will be initiated on program starting. All modes except the Regular work only if exclusivity password is set.





Luxriot EVO Monitor User Guide

The table below contains a detailed description for each setting.

Setting	Description	Default Value
Maintain Original Aspect Ratio	Keep original picture proportions; when OFF, image will be stretched to fill in the viewport	Disabled
Exclusive Mode	Defines if exclusivity mode is applied to all monitors or currently opened application instances only; <i>All Monitors</i> mode will force fill all displays with child Luxriot Monitor application instances upon enabling exclusivity mode; <i>Opened screens only</i> mode will still allow background application/OS access via displays where no Luxriot Monitor is launched	Opened screens only
Exclusive Mode Password	User-defined password for unlocking exclusivity and locked application modes	[none]
Application Startup Mode	Enables the application to be started in the specified mode (locked/exclusive/both/none); regular = no special mode	Regular
Interactive User Idleness Action	Overrides or allows OS screensaver	System Settings

Luxriot EVO Monitor User Guide

Viewport Overlays

General	Viewport overlays			
Viewport overlays	Display status			
Library		ALWAYS ON	ON IF SELECTED	ALWAYS OFF
Snapshots export	 Writing On Disk	<input type="radio"/>	<input checked="" type="radio"/>	<input type="radio"/>
Video export	 Motion Detection	<input type="radio"/>	<input checked="" type="radio"/>	<input type="radio"/>
	720P Video Resolution	<input type="radio"/>	<input checked="" type="radio"/>	<input type="radio"/>
	H.264 Video Compression	<input type="radio"/>	<input checked="" type="radio"/>	<input type="radio"/>
	24FPS Video FPS	<input type="radio"/>	<input checked="" type="radio"/>	<input type="radio"/>
	712K/5 Video Bitrate	<input type="radio"/>	<input checked="" type="radio"/>	<input type="radio"/>
	Display controls			
	 Instant Playback	<input type="radio"/>	<input checked="" type="radio"/>	<input type="radio"/>
	 PTZ Toggle	<input type="radio"/>	<input checked="" type="radio"/>	<input type="radio"/>
	PTZ Controls	<input type="radio"/>	<input checked="" type="radio"/>	<input type="radio"/>

You can assign separate settings to each overlay item. Note that, regardless of application settings, some controls are not displayed if corresponding action is not available for the target device, e.g., the Instant Playback control item is not shown if there is no archive. The following options are available:

- **Always ON:** always display the overlay element
- **ON if selected:** only display the element when viewport is selected
- **Always OFF:** never display the element

For your convenience, visual overlay elements are previewed on the left side of each setting.

Luxriot EVO Monitor User Guide

Setting	Description	Default Value
General	<p>Items displayed in the upper-left-hand corner:</p> <ul style="list-style-type: none"> • Title (device or resource name) • Close (a control allowing to close the current stream and free the viewport) • Lock (a control allowing to lock the stream in its current viewport, making it immune to pop-ups) • User buttons 	Always ON
Display status section	<p>Data displayed in the bottom-left-hand corner of the viewport:</p> <ul style="list-style-type: none"> • Writing On Disk (recording status) • Motion Detection (motion presence) • Video Resolution (picture size) • Video Compression (stream video codec) • Video FPS (stream frame rate) • Video Bitrate (stream data amount) 	ON if selected
Display controls section	<p>Controls displayed in the bottom-right-hand corner of the viewport:</p> <ul style="list-style-type: none"> • Instant Playback (switch mode) • PTZ Toggle (PTZ and preset controls ON/OFF) • PTZ Controls (virtual PTZ sphere) • Digital PTZ Toggle (DPTZ ON/OFF) • Digital PTZ Controls (digital zoom control overlay) • Motion Detection Grid Toggle (MD grid ON/OFF) • Substream Mode Toggle (switch displayed stream: main/sub/auto) • Maintain Aspect Ratio Toggle (auto/fill/original) • Export Snapshot (save frame to library) • Output Audio Toggle (a press-to-speak audio OUT control) • Input Audio Toggle (incoming audio ON/OFF) • Toggle Notifications Pane (ON/OFF) • Notifications Pane (panel presence) 	ON if selected, except for PTZ controls
PTZ controls section	<p>Pan, tilt and zoom controls:</p> <ul style="list-style-type: none"> • PTZ Control (PTZ functionality ON/OFF regardless of HUD presence) • PTZ HUD (virtual PTZ sphere) • Iris Slider (iris open/close) • Focus Slider (manual focus control) • Zoom Slider (zoom IN/OUT) • PTZ Toolbar (advanced PTZ controls: presets, tours) 	ON if selected
Motion detection section	Show motion detector grid overlay	Always OFF

Luxriot EVO Monitor User Guide



If you set PTZ Control to *Always OFF*, you will have to use the PTZ Toggle overlay control in order to enable PTZ functionality in live view. If you disable PTZ toggle item, too, user will have no access to PTZ from the viewport.

Luxriot EVO Monitor User Guide

Library

Define the default location for snapshots and exported video to be saved to. The original default location is:
C:\Users\<Windows_user>\Documents\Luxriot Monitor

Snapshot Export

Set file properties for the exported snapshots. The table below contains a detailed description for each setting.

Setting	Description	Default Value
Snapshot file name	File name for exported JPEG snapshots; \$(variables) are used for automatic timestamps	\$(Year)-\$(Month)-\$(Day) \$(Hour)-\$(Minute)-\$(Second)-\$(Millisecond) \$(StreamTitle).jpg
JPEG quality	Picture quality, 1 to 100%	60
Always use snapshot export settings	If enabled, the settings above will be used for all snapshots, otherwise the user will be prompted for these every time	Enabled

Luxriot EVO Monitor User Guide

Video Export

General

Viewport overlays

Library

Snapshots export

Video export

Video export

Video file name

\$(Year)-\$(Month)-\$(Day) \$(Hour)-\$(Minute)-\$(Second) \$(StreamTitle)

▶

Name matrix used to compose video file name.

Video output file type

AVI

▼

Default file type for video output.

Video compression

Original - Video quality remains as received from a camera. (Recomm

▼

Resolution

Full

▼

Set file properties for the exported video clips. The table below contains a detailed description of each setting.

Setting	Description	Default Value
Video file name	File name for the exported video; \$(variables) are used for the automatic timestamps	\$(Year)-\$(Month)-\$(Day) \$(Hour)-\$(Minute)-\$(Second) \$(StreamTitle)
Video output file type	Choose between AVI and frame series	AVI
Video compression	Keep the original compression or use regular JPEG compressor	Original
Resolution	Choose between full and quarter original resolution	Full
Subtitles	Enable hard merged subtitles for the exported video	Disabled
Reduce long gaps	Merge chunks of video together if the exported footage has gaps	Enabled
Always use archive export settings	If enabled, the settings above will be used for all the exported video clips, otherwise the user will be prompted for these every time	Enabled

Luxriot EVO Monitor User Guide

7 Live View Section

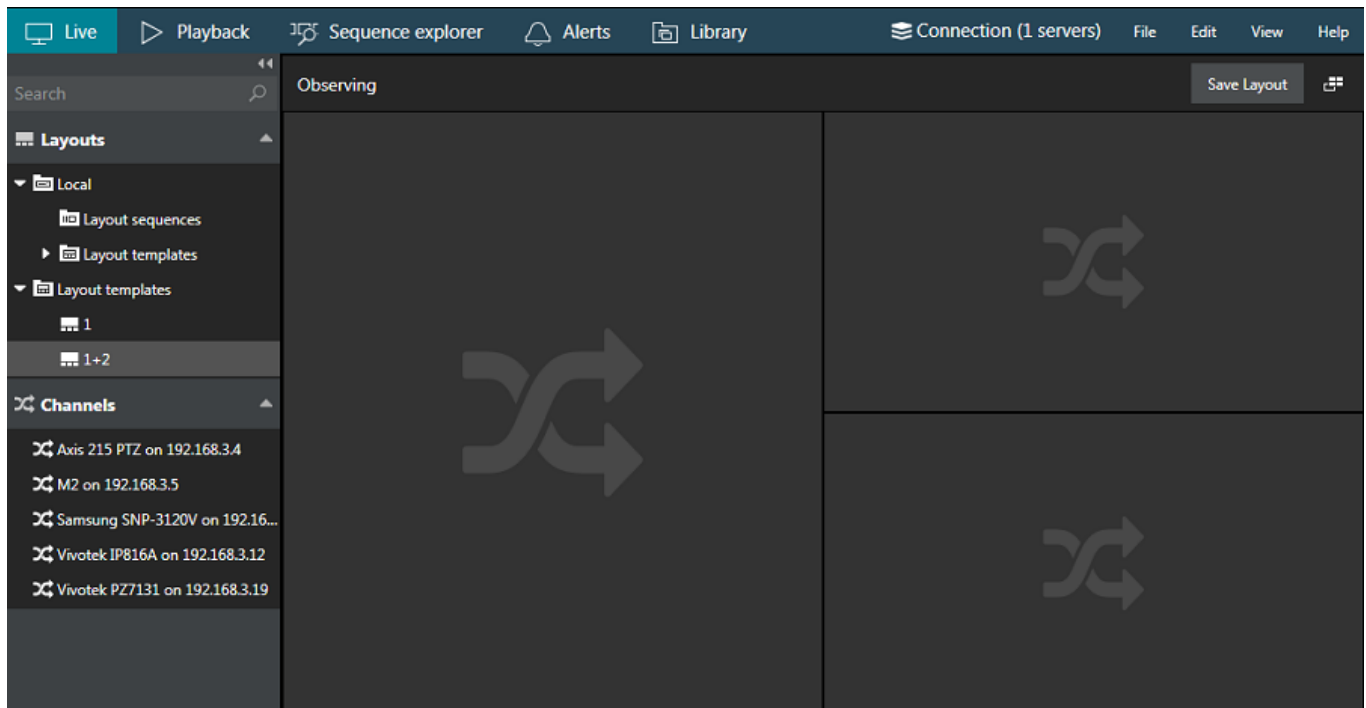
Click the *Live* tab on the upper panel in order to switch to live video monitoring.

The panel on the left displays resources from connected servers: layout templates, layouts, channels, maps and user buttons loaded from configured servers.

- **Search:** global resource search
- **Layouts and layout templates**
 - Local resources: stored on Luxriot Monitor machine
 - Server resources: loaded from connected server(s)
- **Channels:** per server or mixed, if the *Merge resources* option has been enabled in [server connection](#) properties
- **Maps***
- **User Buttons***

*Some resources may be unavailable for certain software editions.

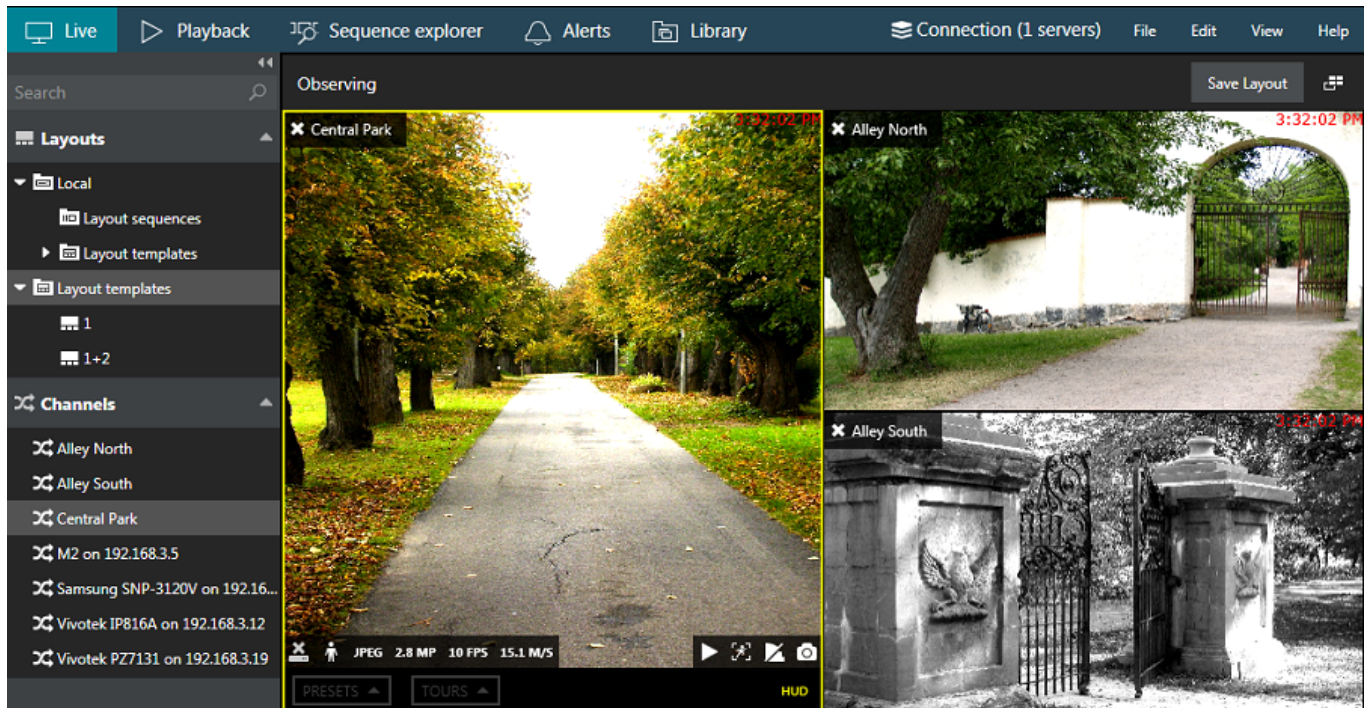
Depending on the resource type, you may be able to click and/or drag items. See the relevant sections of this manual for detailed information on how to use and manage each of these resources.



From the *Layouts* menu on the left, select your desired layout template and then drag and drop it into the viewing area. Next, drag and drop channels from your desired server to the empty slots, using the *Channels* menu section on the left. You can save the current layout using the *Save layout* button in the upper-right-hand corner; it will become available in the layout list on the left under the target server name. Right next to it, there is a button that can be used to auto-detect displays, which is especially useful in multi-monitor systems.

Layout templates can be selected either from default local templates or from server layout templates. The latter can be created on the specified server via the Luxriot EVO Console management application.

Luxriot EVO Monitor User Guide



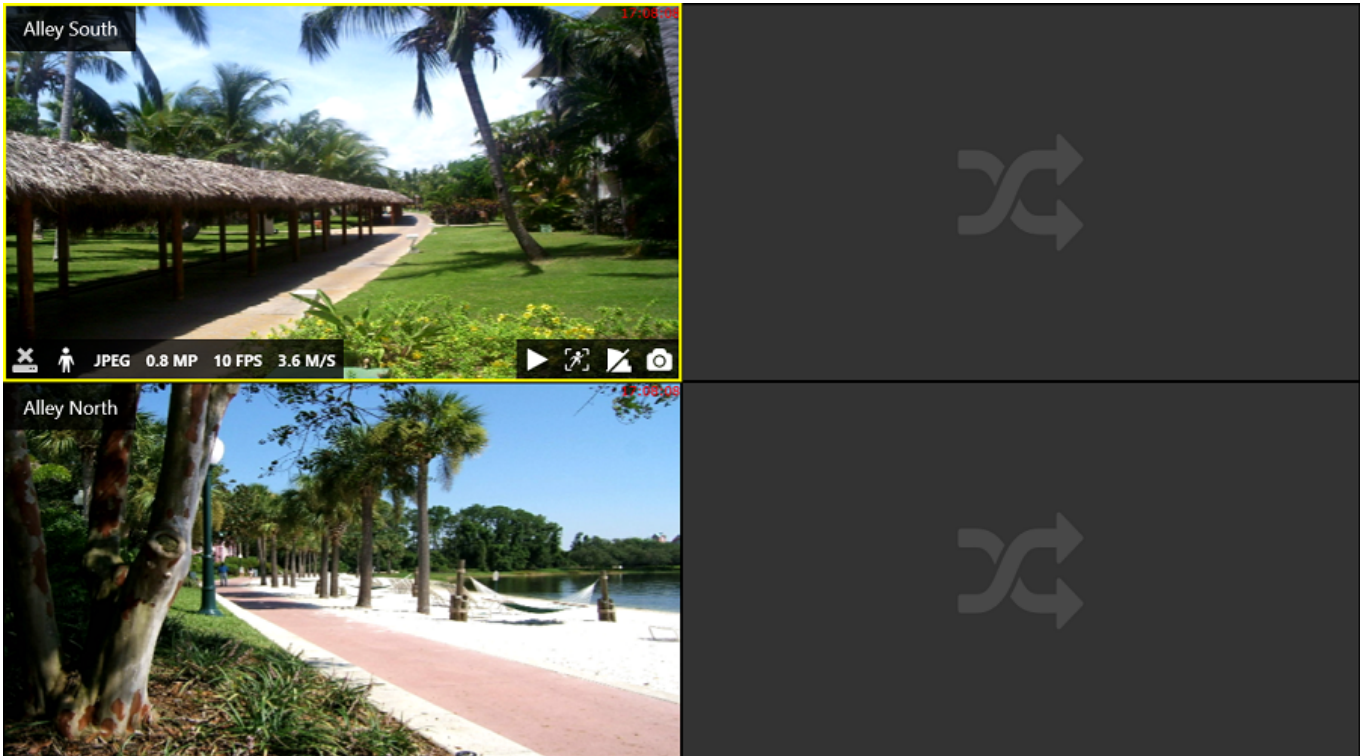
The camera name is displayed in the top left corner of each channel; the current device time will appear in the upper-right-hand corner.

Click any live view to bring up additional channel-specific parameters and quick controls. Overlay preferences can be changed via [Application settings](#). By default, these are:

- Upper-left: general viewport controls
 - **X** - close live stream and free viewport - available with or without viewport selection
 - viewport **lock status**: unlocked (default) or locked; unlocked means that the viewport can be used for map/camera pop-up
 - **camera name**
 - [user button](#), if assigned
- Upper-right: current time on the server from which the device originates
- Lower-left: **stream details**
 - recording status: X = not recording, yellow arrow = recording
 - motion detector status: running = motion present, standing still = no motion detected
 - video codec of the stream
 - picture resolution, abbreviated
 - stream frame rate, FPS
 - stream bitrate, KBytes/s or MBytes/s
- Lower-right: **controls**; enabled items are highlighted yellow
 - [instant playback](#) (not available if there are no recordings)
 - PTZ toggle: [PTZ HUD](#) and bottom panel ON/OFF
 - [DPTZ toggle](#)
 - [motion grid](#) ON/OFF
 - incoming audio ON/OFF (if enabled and supported by camera/software integration)
 - audio OUT: press and hold the microphone to speak (control is present only if the feature supported by camera/software integration)
 - [substream](#): auto/main/substream
 - aspect ratio (auto/stretch to fill viewport/original)
 - notification panel toggle
 - [snapshot](#) export to library
- Bottom: [PTZ controls](#)

Luxriot EVO Monitor User Guide

- Presets
- Tours
- HUD (Heads Up Display) ON/OFF
- Centre: [PTZ HUD controls](#)
 - Pan and tilt arrows
 - Zoom slider
 - Iris slider
 - Focus slider



The upper-right-hand corner of live view section contains controls for [multimonitor](#) and [video wall](#) setup.

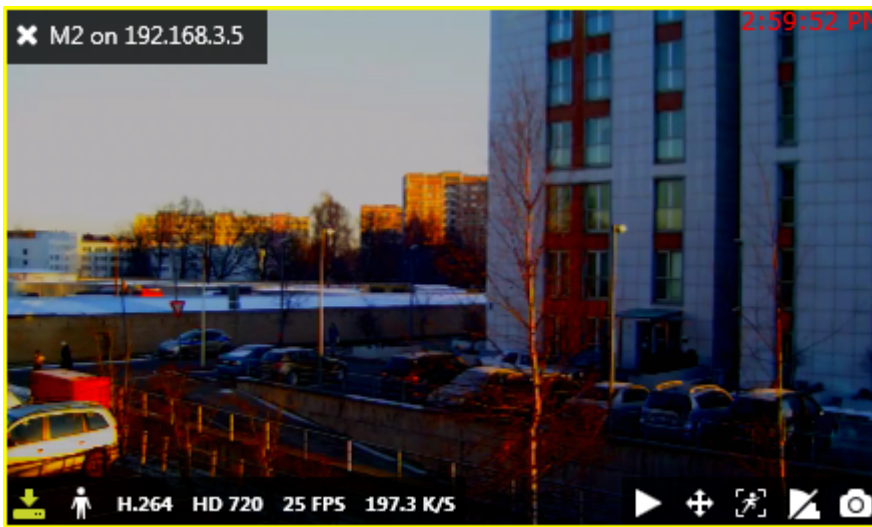


Luxriot EVO Monitor User Guide

8 Viewport Overlay

Each video displayed in live view is placed into a 'slot', a part of the layout, called viewport. In addition to the picture itself, viewport contains detailed information about the video stream, as well as several quick controls. These elements overlay the video stream, meaning that the actual video does not contain them and they only exist as a part or GUI for enhanced user interaction.

Live View



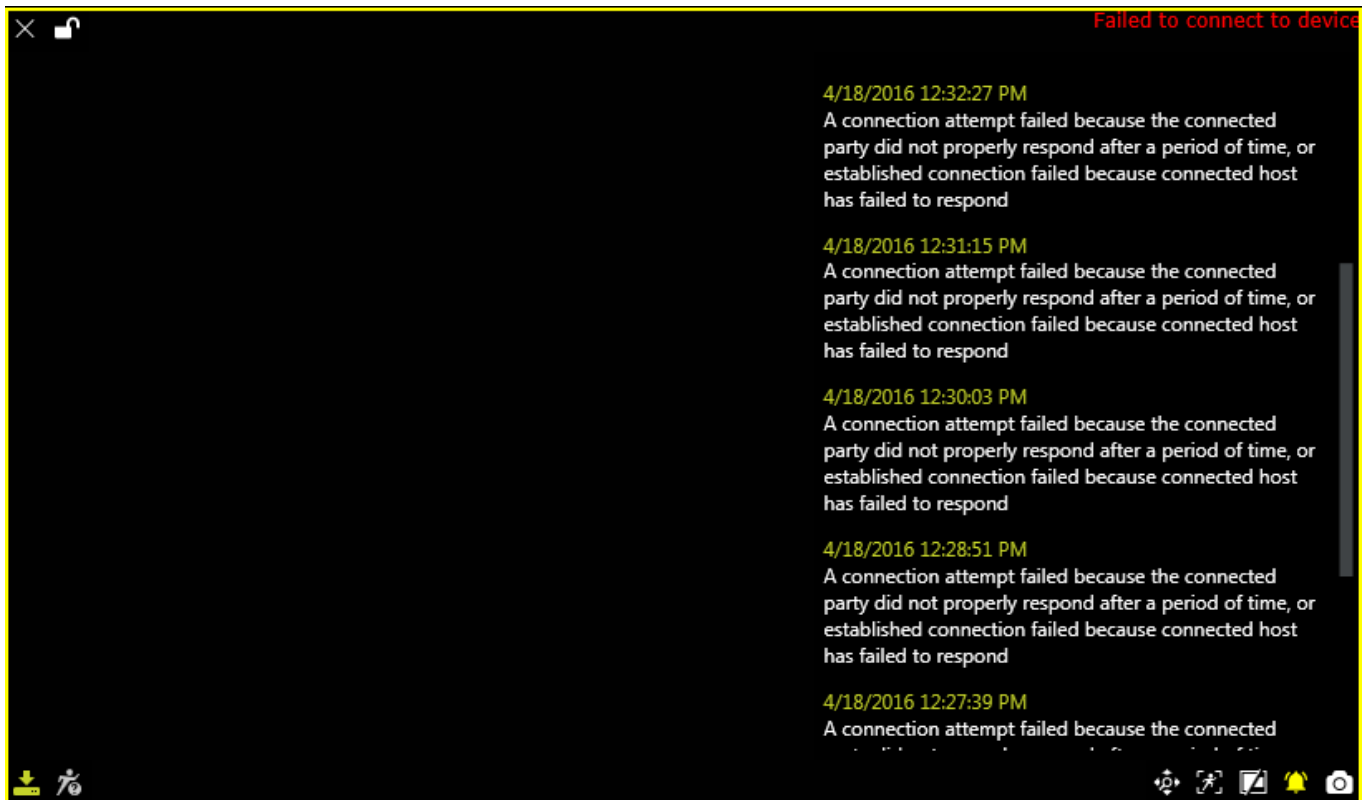
The following overlay controls are available in live view:

- Upper-left: general viewport controls
 - **X** - close live stream and free viewport - available with or without viewport selection
 - viewport **lock status**: unlocked (default) or locked; unlocked means that the viewport can be used for map/camera pop-up
 - **camera name**
 - [user button](#), if assigned
- Upper-right: current time on the server from which the device originates
- Lower-left: **stream details**
 - recording status: X = not recording, yellow arrow = recording
 - motion detector status: running = motion present, standing still = no motion detected
 - video codec of the stream
 - picture resolution, abbreviated
 - stream frame rate, FPS
 - stream bitrate, KBytes/s or MBytes/s
- Lower-right: **controls**; enabled items are highlighted yellow
 - [instant playback](#) (not available if there are no recordings)
 - PTZ toggle: [PTZ HUD](#) and bottom panel ON/OFF
 - [DPTZ toggle](#)
 - [motion grid](#) ON/OFF
 - incoming audio ON/OFF (if enabled and supported by camera/software integration)
 - audio OUT: press and hold the microphone to speak (control is present only if the feature supported by camera/software integration)
 - [substream](#): auto/main/substream
 - aspect ratio (auto/stretch to fill viewport/original)
 - notification panel toggle
 - [snapshot](#) export to library
- Bottom: [PTZ controls](#)

Luxriot EVO Monitor User Guide

- Presets
- Tours
- HUD (Heads Up Display) ON/OFF
- Centre: [PTZ HUD controls](#)
 - Pan and tilt arrows
 - Zoom slider
 - Iris slider
 - Focus slider

Live view has its own **notification panel** for each channel, which can be turned ON and OFF by using the notification panel toggle control in the bottom-right-hand corner of each viewport. It contains recent stream errors, e.g., PTZ related errors, which have occurred since the time the channel was opened for live view.



The overlay control set may vary depending on device capabilities and settings. For example:

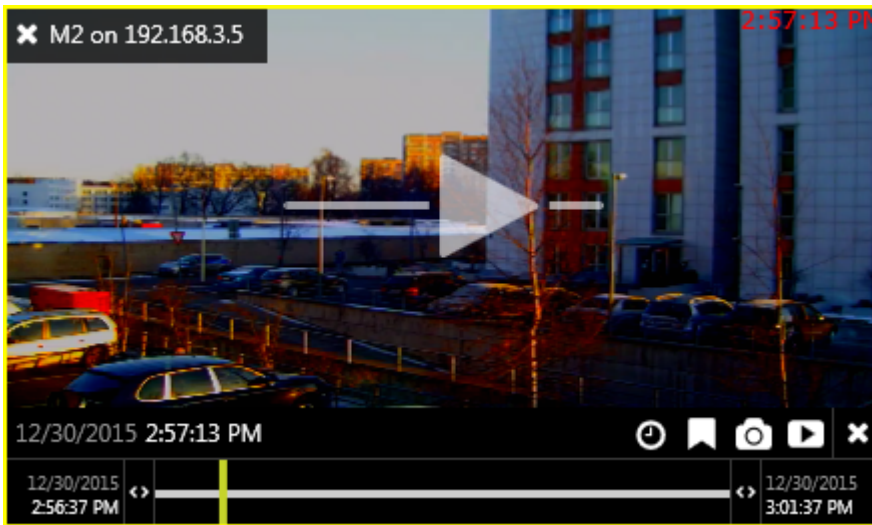
- if no archive is recorded for the target stream, instant playback will not be available
- for PTZ-incapable cameras, PTZ toggle will be absent
- substream toggle will not be displayed when device only has one stream
- audio OUT will not be displayed if this feature is not supported by camera or is not implemented on the software side etc.

Overlay elements can be modified in [Application Settings](#), which are reachable via main menu by clicking *Edit* -> *Settings*. Note that overlay parameters are defined for the whole application and cannot be set separately for the application instances (windows) and/or individual devices.

Luxriot EVO Monitor User Guide

Instant Playback

Overlay elements in the [instant playback](#) mode are different from those in live view.



The following overlay controls are available in the instant playback mode:

- Upper left:
 - **X** - close live stream and free viewport
 - viewport **lock status**: unlocked (default) or locked; unlocked means that the viewport can be used for map/camera pop-up and may therefore be replaced by other camera at any moment
 - camera name
- Centre: **play/pause**
 - click to play
 - drag to the centre of the line to pause
 - drag right to go fast forward
 - drag left to rewind fast
 - release from dragging to continue normal playback
- Bottom right: **controls**
 - go to specific time (keyboard shortcut: Space)
 - create a bookmark with current timestamp
 - take a snapshot
 - automatically export loaded footage
- Bottom: **timeline**
 - use the <> arrows to adjust the loaded footage time boundaries (which, by default, are the last five minutes)
 - drag right to go forward in time
 - drag left to go backwards in time
 - the vertical yellow line indicates current playback moment, drag it anywhere or click to move along the timeline

Luxriot EVO Monitor User Guide

Sequence Explorer

Once you have selected a fragment or a set of fragments, the overlay controls in the bottom right corner of the selection offer the following possible actions:

- **Magnifier** button: make a new sequence out of selected fragments; use the *History* controls <> in the upper panel to go back
- **Play** button: play selected footage in [archive playback](#) mode
- **Video** button: export video from the selected time range (no additional *Set time range* window is displayed)

More detailed control and operation descriptions for the sequence explorer can be found [here](#).

Luxriot EVO Monitor User Guide

9 Substreams

Substream is a lower resolution video used for reducing Luxriot Monitor PC resource usage (CPU, network) for live view display. For example, main stream for recording can be set to 1920x1080 at 30fps and substream - to 640x480 at 15fps, which would provide much lower load for Luxriot Monitor PC to display video stream. This allows to have high quality recordings combined with the ability to view many video streams on a low-performance Luxriot Monitor PC and with limited bandwidth.

Both streams are available for live view and for recording (the latter is configured via Luxriot EVO Console). The live stream selection is configured to Auto by default, which means automatic switching between higher/lower resolution streams depending on the image size in order to save network and CPU resources. For instance, Luxriot Monitor may show a high-resolution stream if you view one camera at a time, but if you go to 4x4 view, Luxriot Monitor will automatically switch all the cameras to substreams, if they are available.

Luxriot EVO Monitor application has the following visual indication for substreams in **live** view as a viewport overlay item (bottom right):



Automatic selection between high and low resolution



High quality picture



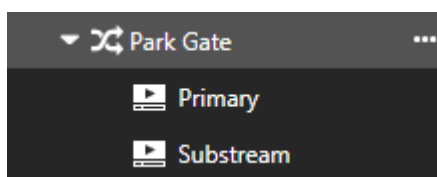
Low quality picture (substream)

When no substream is available, the viewport overlay indicator simply does not appear at all for the target channel.

Substreams must be activated on the camera via Web browser and, for some devices, also in the stream properties in Luxriot EVO Console. Please verify camera performance to make sure substream can be handled by the camera along with the other features enabled on the camera: some devices tend to lower overall FPS with the second stream turned ON.

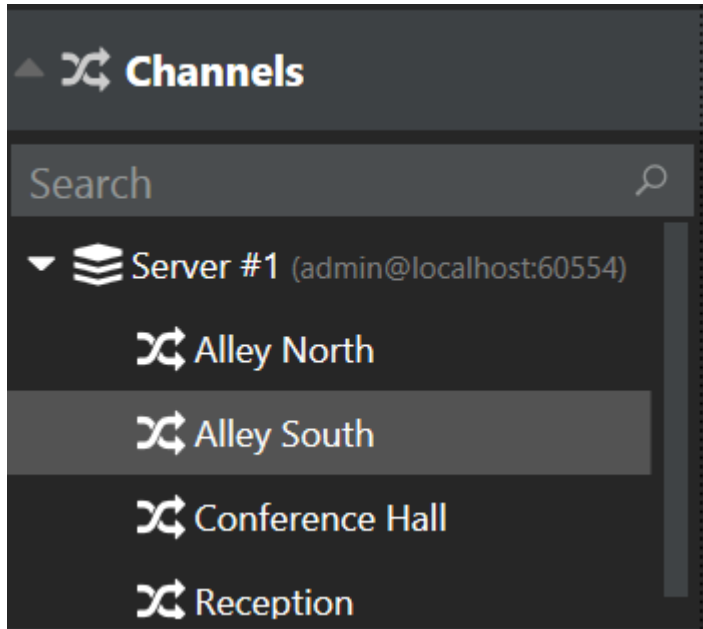
Most cameras provide second stream as first stream image scaled to fit low resolution; however, some devices crop the centre of a high-resolution image to fit the small frame, and thus the substream picture appears as if it were zoomed in. Keep this in mind when you are using substream for live view and especially for software-side motion detector analysis.

If both main stream and substream are configured for **recording**, the target channel will be expandable in playback mode and will have both streams available for playback.



10 Channels

All the channels from connected servers are listed in the *Channels* section of the *Resources* section on the left. If the server connection has the *Merge resources* option ON, all resources will be shown together without per-server grouping. Note that channels are displayed according to the logged user privileges.



Channels are loaded with visual groups, if there are any; otherwise, they are simply listed under the relevant server name. Use the *Search* field above the channel list to quickly find a specific channel.

Double-click or drag and drop desired channels onto the layout viewports on the main live/playback window to view stream contents. For secondary displays, use drag and drop method only.

When you double-click channels in live/playback view, they fill viewports in the following manner:

- first, all the empty viewports are filled - from top to bottom, and from left to right;
- then, the filling sequence starts again from the very first viewport.

To remove any channel from live view, click the overlay control *X* button next to the camera name in the upper-left-hand corner of the viewport.

Luxriot EVO Monitor User Guide

11 PTZ

For PTZ-enabled cameras, pan, tilt and zoom controls are available both for live and playback modes. Note that available controls may depend on selected model and actual camera capabilities.



When two or more simultaneous PTZ command requests (either from an action or from direct user input) are sent at the same time, **PTZ priority** parameter is used to decide who gains access first. When this happens, request with a higher priority is fulfilled while request with a lower priority is delayed for ten seconds. If after ten seconds the higher-priority action is still going on, the lower-priority action is denied PTZ access for ten more seconds and so on.

If two users or actions with the **same** PTZ priority level have an access conflict, they will be both granted PTZ access simultaneously and the order of executed PTZ commands is defined by which of the commands reaches the device first.

Default PTZ priority for all users, including those built-in and imported, and also for all actions is equal to five (medium priority). You can assign any user/action a higher PTZ priority (six to ten) or a lower one (four to zero) by editing individual user/action properties in Luxriot EVO Console. The only exception is the **PTZ tours**, which by default have the lowest priority (equal to zero), which means that any user or action can intercept PTZ control; the tour will go on after the PTZ control from a higher-priority user/action is released.

PTZ control is carried out using the HUD overlay controls or point-to-PTZ style controlling without overlay elements; it is automatically enabled if the camera has PTZ facilities.

- If HUD is enabled, use the virtual PTZ sphere to control camera movement: click and hold to move the camera up/down, left/right or diagonally; the sliders allow to adjust the camera's iris and focus, as well as to zoom IN/OUT.
- If HUD is not enabled, click anywhere on the picture to re-position the camera using indicated point as a new picture centre.

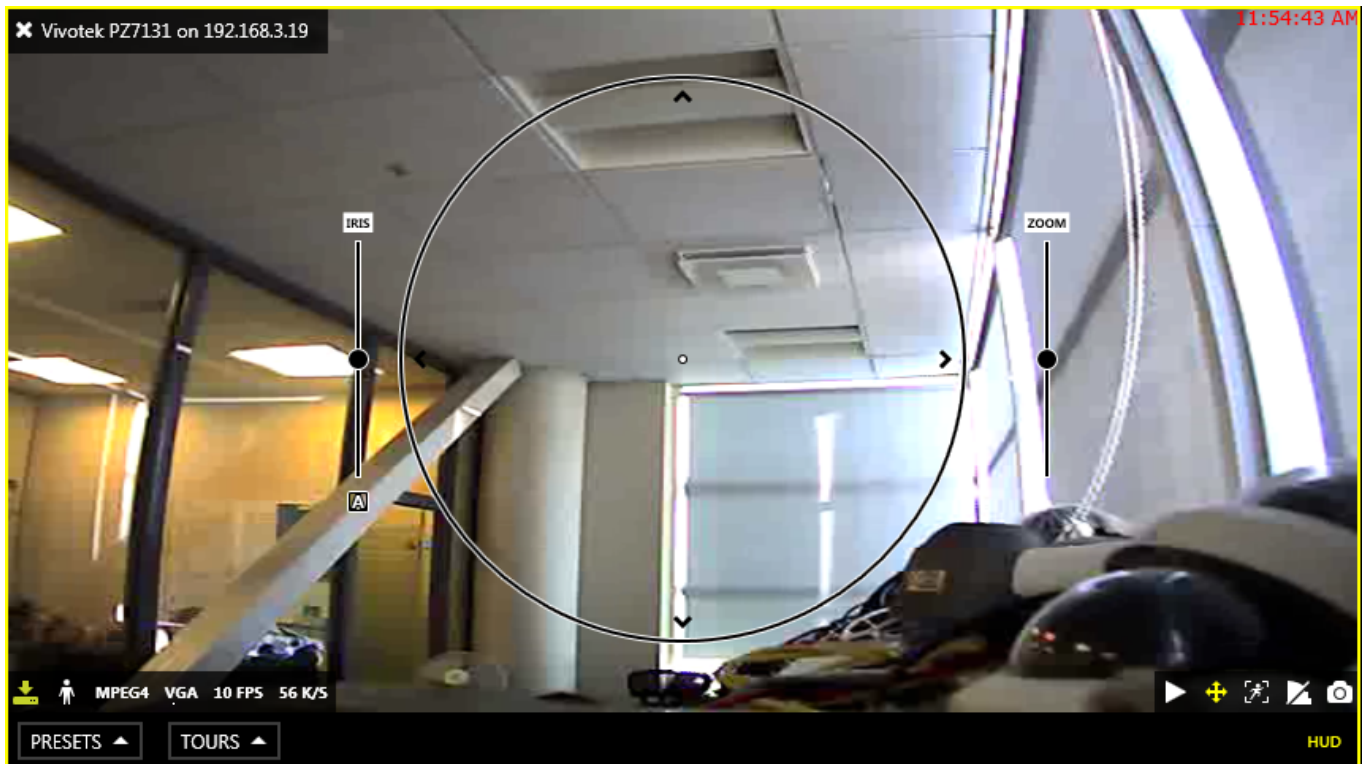


When re-positioning a PTZ camera, note that some cameras may have response delay due to heavy device load, physical distance, network latency etc. Bear this delay in mind when using PTZ and, if necessary, release the virtual PTZ sphere controls earlier.

The following controls are available:

- Pan and tilt arrows
- Zoom slider
- Iris slider
- Focus slider
- Automatic focus/iris (**A** button on the lower slider end)
- Presets and tours
- HUD (Heads Up Display) ON/OFF

Luxriot EVO Monitor User Guide



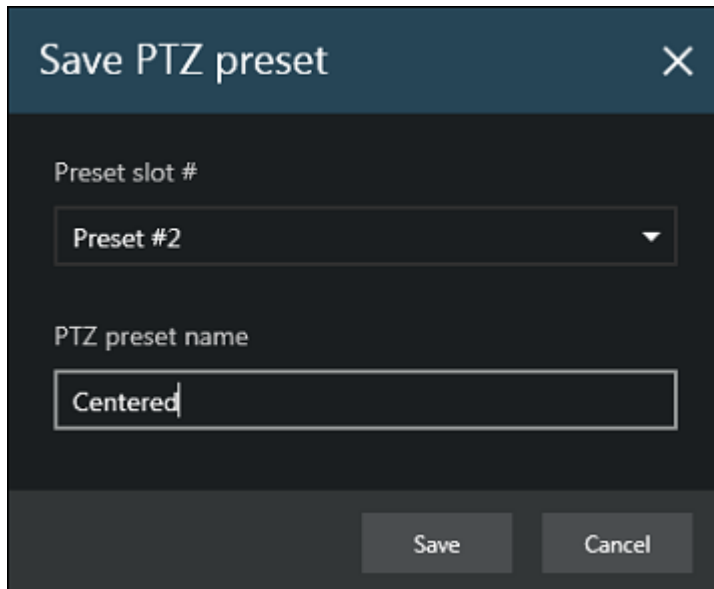
Use the bottom overlay menu for presets, tours and HUD ON/OFF switching.

Luxriot EVO Monitor User Guide

Presets

Click *Presets* below the picture to view the list of available presets; select any to let camera **go** to the selected pre-defined position. To **save** a preset, adjust the camera position using PTZ controls, then click *Presets* and choose *Save preset*. Enter user-friendly name for your preset and pick a preset to be re-defined from existing preset list, then click *Save*.

Note that PTZ presets cannot be explicitly deleted: to remove an old entry, simply replace it with a new one.

A dark-themed dialog box titled "Save PTZ preset" with a close button (X) in the top right corner. It contains two input fields: "Preset slot #" with a dropdown menu showing "Preset #2", and "PTZ preset name" with a text box containing "Centered". At the bottom are "Save" and "Cancel" buttons.

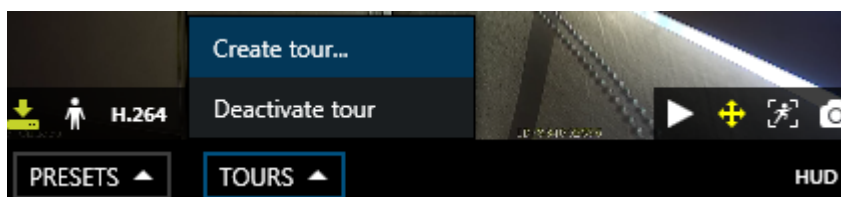
Tours

Multiple PTZ presets can be combined to create a preset tour - a series of positions for a PTZ camera to go to through repeatedly. Each preset in a tour can be assigned a duration period of its own.

Click *Tours* below the picture and select *Create tour* to make a new sequence. Before building a tour, make sure you have created all presets that will be used in the target tour.

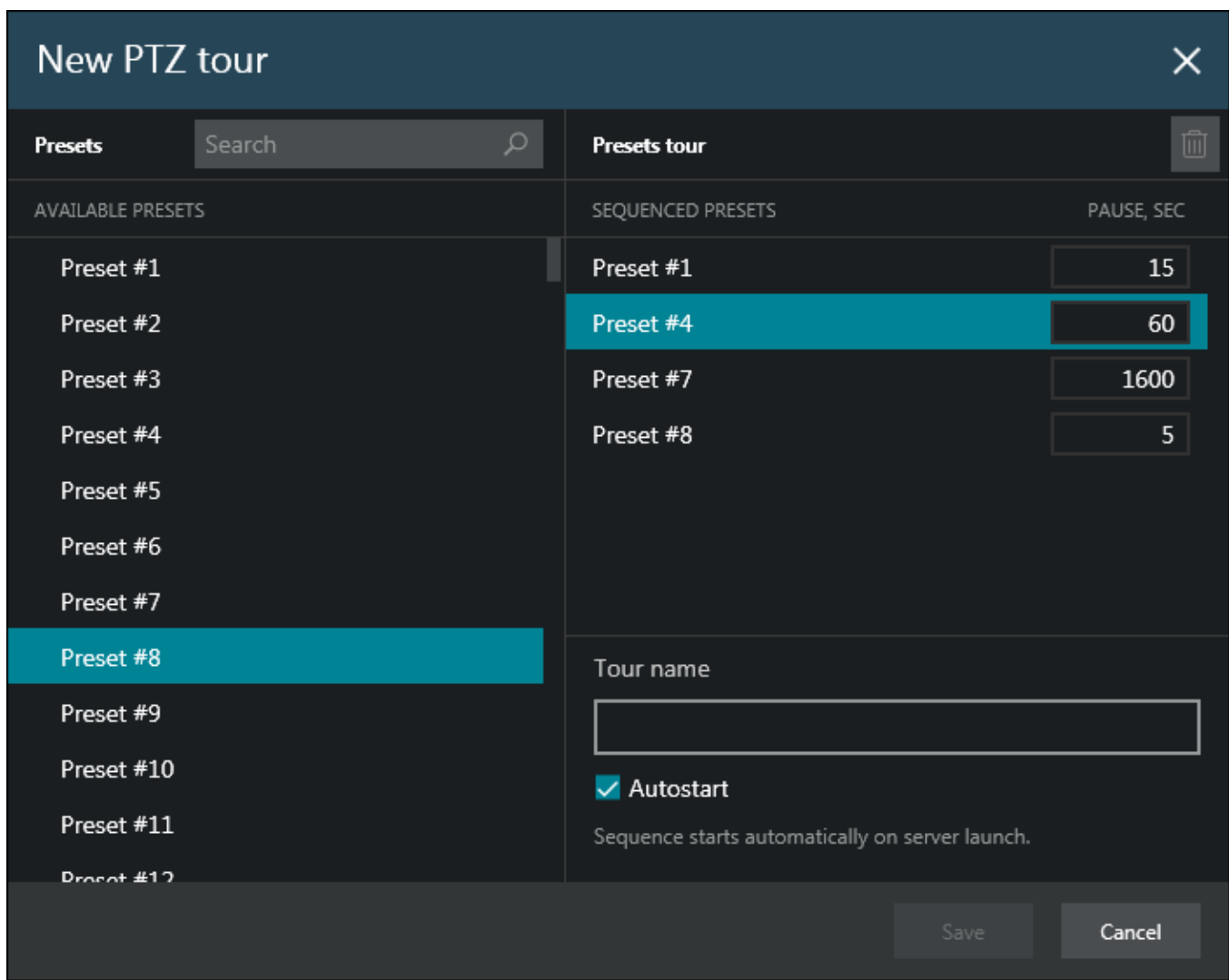


Tours are saved locally and are not synchronised between the different Luxriot Monitor installations. Make sure that, if you have multiple Luxriot Monitor connections, you do not create conflicting tours.



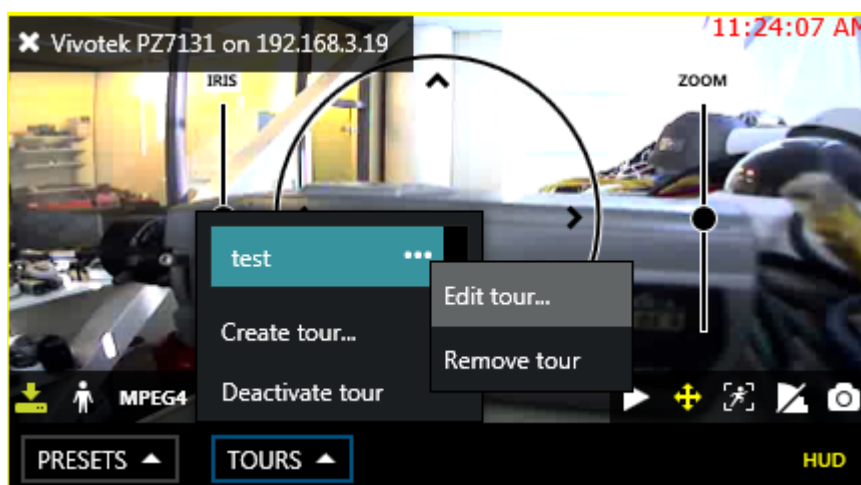
Add and remove presets by double-clicking them; newly added presets will appear at the end of the tour preset list. You can also use *Search* field to quickly find your desired preset, and the recycle bin icon in the upper-right-hand corner allows you to remove a selected preset from the target tour.

Luxriot EVO Monitor User Guide



Click a tour preset to change its delay time. By default, each preset has a pause of five seconds, and you can change that to whatever time period you wish for the camera to continue overlooking that specific position. Next, define a title for the target tour and enable automatic start, if desired; if you select autostart, the sequence will be launched immediately after connecting to the server.

When you have finished, click *Save* to add your newly created tour to the list of available tours.



To start a tour, click *Tours* and simply select the one you want from the list; to stop it, click *Deactivate tour*. Each tour options - *Edit* and *Delete* - can be accessed via the button next to the tour name.

Luxriot EVO Monitor User Guide

12 Digital PTZ and Dewarp

Digital PTZ


Digital pan-tilt-zoom (DPTZ) can be enabled for both PTZ and non-PTZ cameras. This feature provides image magnification by the means of cropping and enlarging the picture. While it is mostly useful for devices without optical zoom capabilities, if you do not wish to grant some of your users PTZ control access, then DPTZ can be also used for PTZ devices.

In order to enable DPTZ in **live view**, select the target viewport and enable digital zoom by clicking DPTZ toggle button on the overlay control panel in the bottom right corner. You can also enable DPTZ controls to be visible by default via Luxriot Monitor main menu *Edit* -> [Settings](#) -> *Viewport Overlays* tab.



The overlay zoom slider will appear, allowing you to magnify the picture. Click and drag the slider UP/DOWN to zoom IN/OUT; once you have zoomed IN, click and hold any spot on the picture with your left mouse button to move left/right.

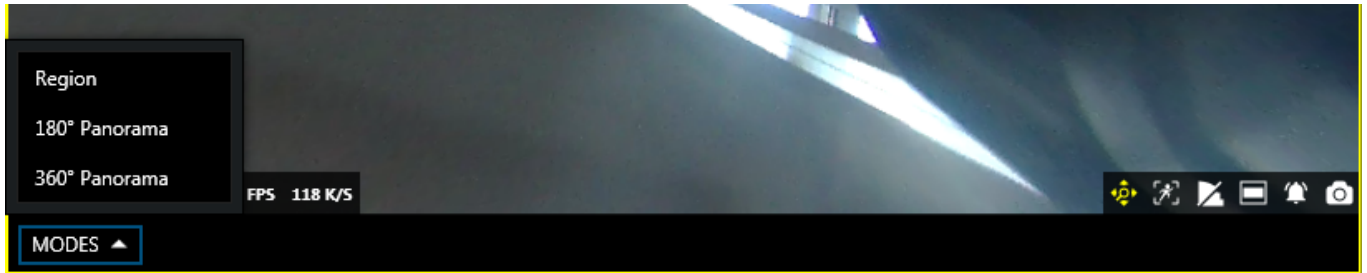
Dewarp

For cameras with fisheye and Panomorph lenses, dewarp mode is enabled when digital PTZ is turned ON. This feature can be used both in **live** view and **playback** mode; in order to use it, click the DPTZ toggle  overlay control in the bottom-right-hand-corner of the viewport.

By default, **region** dewarp mode is turned ON: a part of the dewarped image is displayed in the viewport and camera becomes a virtual PTZ, which can be zoomed and moved through the entire angle that fisheye camera allows. Press left mouse button and drag to pan/tilt in corresponding direction; use the zoom slider to zoom in and out.

You can place one channel into multiple viewports on your viewport layout, enable DPTZ for all of them and then use DPTZ to display different regions of the dewarped image. The created arrangement can be [saved](#) just as usual, via *Save Layout* menu in the upper-left-hand corner: DPTZ positions will be maintained when you load the layout at any time later.

Luxriot EVO Monitor User Guide



If you need a larger part of the scene to be displayed in a single viewport, you can switch to a **180-degree** or a **360-degree** panorama view using the drop-down menu, which appears in the bottom of the viewport when DPTZ is enabled.



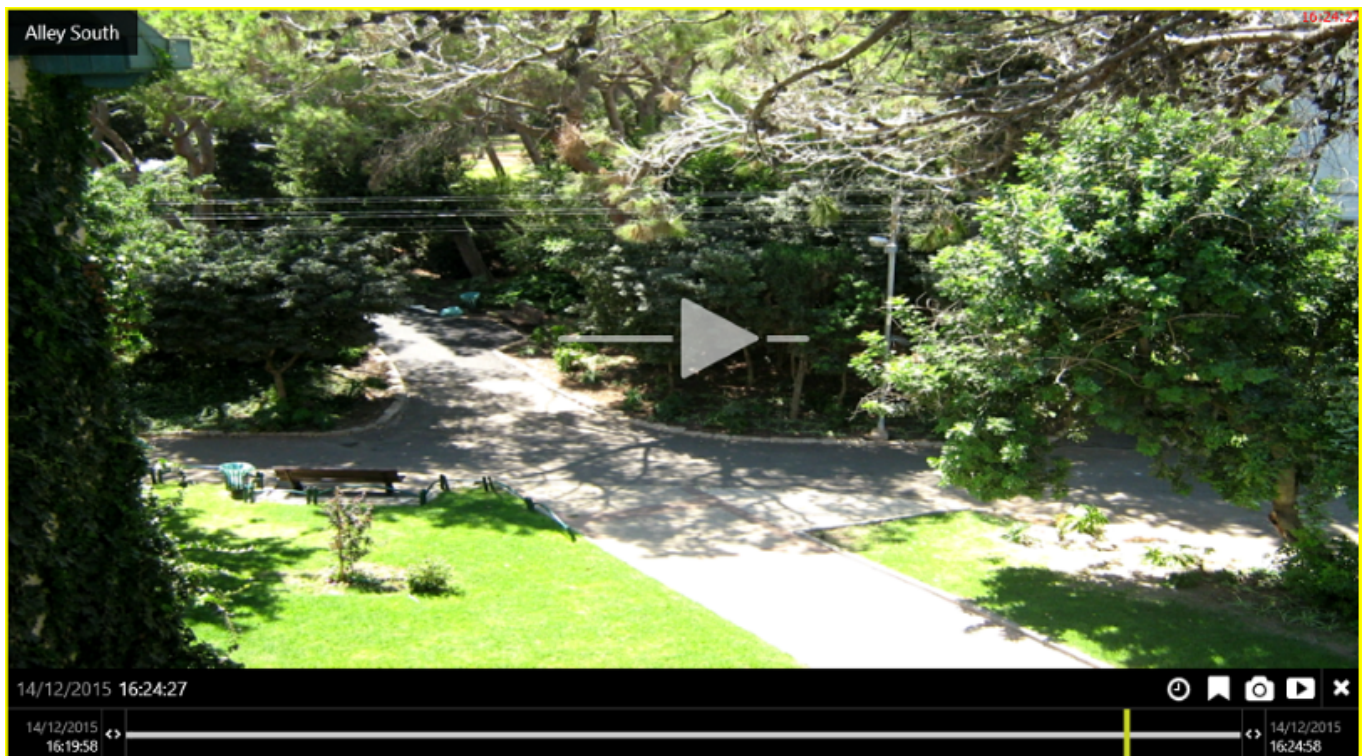
If you do not have a dewarped picture after enabling digital PTZ capabilities, it means that dewarp has not been configured for the target device. In order to do this, go to Luxriot EVO Console and adjust dewarp settings in the channel properties.

13 Instant Playback

Interactive live view mode gives you the opportunity to browse the archive right in the same viewport, without having to switch to the playback mode. This allows you to view recent footage for selected channels, while still having live view displayed for other devices. By default, footage is loaded for the previous five minutes; use the <> timeline boundary controls to change time range by clicking and dragging mouse to the right (zoom in) and to the left (zoom out) of the <> arrows. Note that this mode is only available for channels that have recording enabled.

To enable instant archive playback, use the *Play* button overlay control in the bottom right corner. The channel will automatically switch to playback mode, allowing you to select timestamps, create bookmarks and take snapshots. To exit instant playback mode, use X in the overlay controls' bottom right panel.

Instant playback mode can be enabled for one, multiple or all viewports in the current layout: you can switch between live and instant playback viewports without any limitations.



Luxriot EVO Monitor User Guide

The following overlay controls are available in the instant playback mode:

- Upper left:
 - **X** - close the stream and free viewport
 - viewport **lock status**: unlocked (default) or locked; unlocked means that the viewport can be used for map/camera pop-up and may therefore be replaced by other camera at any moment
 - camera name
- Centre: **play/pause**
 - click to play
 - drag to the centre of the line to pause
 - drag right to go fast forward
 - drag left to rewind fast
 - release from dragging to continue normal playback or leave the pause ON
- Bottom right: **controls**
 - go to specific time (keyboard shortcut: Space)
 - create a bookmark with current timestamp
 - take a snapshot
 - automatically export loaded footage
- Bottom: **timeline**
 - use the <> arrows to adjust the loaded footage time boundaries (which, by default, are the last five minutes)
 - drag right to go forward in time
 - drag left to go backwards in time
 - the vertical yellow line indicates current playback moment, drag it anywhere or click to move along the timeline

Luxriot EVO Monitor User Guide

14 Audio

Using Luxriot EVO Monitor application, you can listen to audio streams from cameras, play back recorded audio, as well as talk back to the cameras. Recorded audio streams are also available when you [export](#) the recordings.

Two-way audio is also supported for the Luxriot EVO Mobile application; please refer to the mobile application user guide.



In order audio stream to be available in Luxriot Monitor, there are a few conditions:

- the device, from which your selected channel originates, must be capable of sending/receiving audio and this feature must be enabled and set to G.711 codec via device Web interface.
- the device, from which your selected channel originates, must have audio support implemented in Luxriot EVO; please contact Luxriot if you have doubts.
- audio function must be enabled for the target channel via Luxriot EVO Console, please check the settings via Luxriot EVO Console according to the *Audio* section of the Luxriot EVO administration user guide.

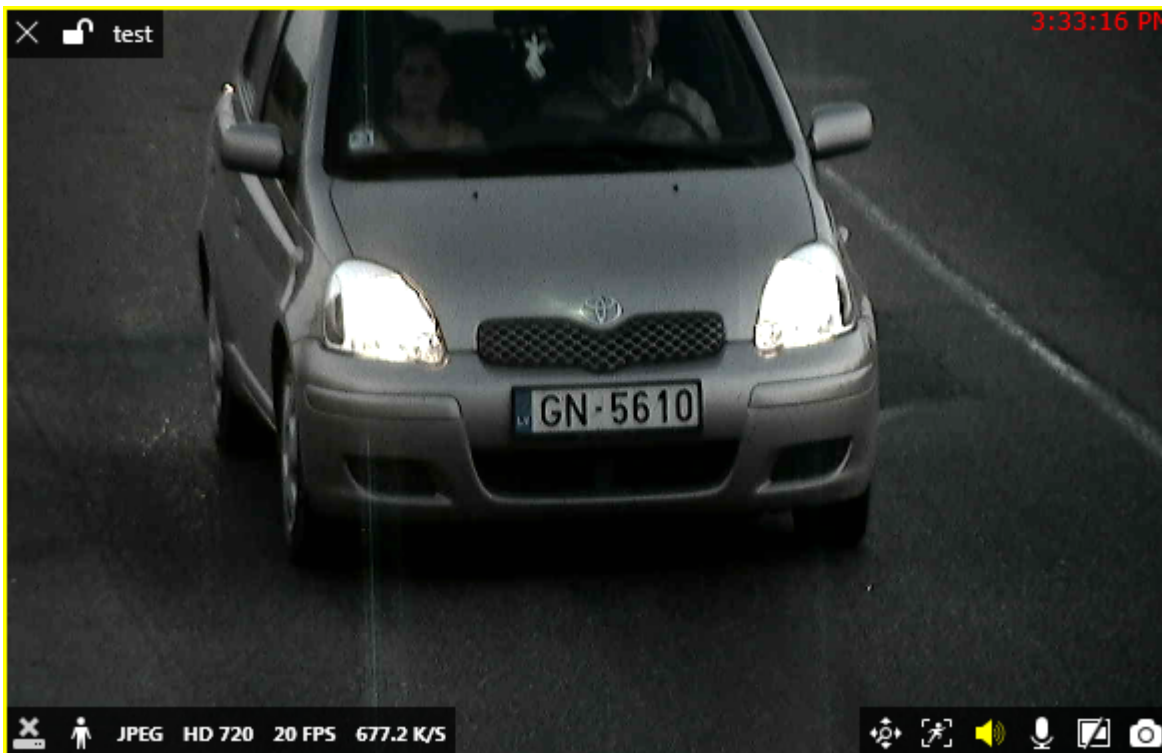
Without these, audio IN/OUT controls will not be available for the selected channel.



Make sure that the speakers and the microphone on your workstation are properly installed and are operable in order to be able to use the audio functionality in Luxriot EVO Monitor.

Live View

Audio IN/OUT toggle overlay controls are enabled by default for the live view and become available when you select a viewport by clicking on it. You can change this preference via Luxriot EVO Monitor main menu by going to *Edit -> Settings*: you will find the related settings in the *Display controls* section of the *Viewport overlays* tab. The available display options are: always show the overlay control, show only if the viewport is selected and disable the overlay control.



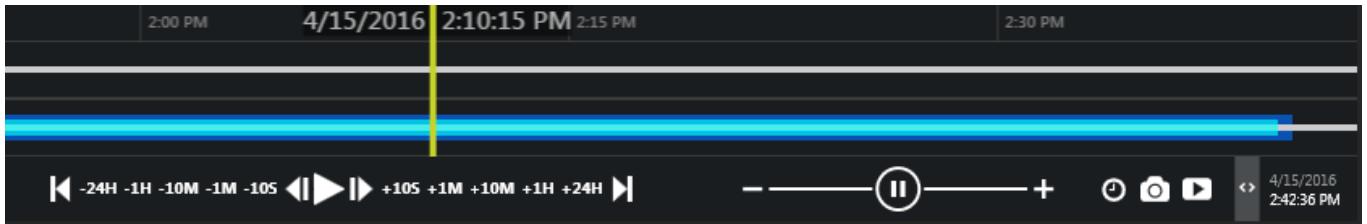
Luxriot EVO Monitor User Guide

By default, live audio is OFF; in order to listen to the incoming audio, click the **speaker** overlay control so that it becomes yellow: if audio functionality has been enabled on the device side and in Luxriot EVO Console, you should be able to hear the sound coming from the target device.

In order to send some audio back to the camera, press and hold the **microphone** overlay control (it will also turn yellow, indicating that reverse audio is active) to speak, then release the control when you have finished speaking.

Playback

If a channel has incoming audio recording enabled, it will be displayed in the archive playback mode. On the timeline, recorded audio is denoted by a **blue** line, which is slightly wider than the white line (video stream) and the cyan line (motion).



By default, audio is muted; in order to enable it, select your desired channel simply by clicking on the picture (viewport) and then use the **speaker** overlay control to turn audio ON. Note that the overlay control will only be available if there is some recorded audio for the selected channel. Then, start playing back the recordings as usual to play both video and audio streams. Use your Windows volume mixer to adjust the sound volume.

Luxriot EVO Monitor User Guide

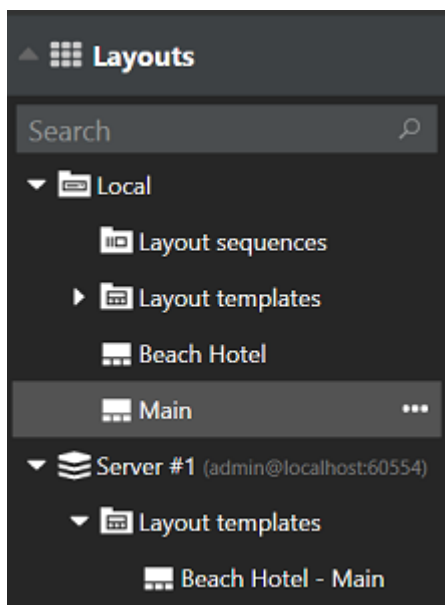
15 Layouts

Layout is a pre-configured viewport configuration with channels assigned for live view and archive playback. Layouts are created by filling a layout template with video channels. There are two main groups of layouts: local and shared.

Local layouts are created and stored locally on the same computer where the Luxriot Monitor is installed; these are not available for other machines connected to the same server.

Shared, server-side layouts are kept on each server and are available for all users that are connected to the same server from other client computers. If the license limits the client connection number to 1, layouts can still be shared between non-concurrent client connections from different machines.

Layout template is a grid-like viewport pattern without any channels bound to it. There is a set of default layout templates stored locally with each Luxriot Monitor installation; also, user-defined custom templates can be created via Luxriot EVO Console. Layout template with the channels assigned to viewports can be saved as a layout.




Drag and drop your desired layout template from the *Resources* menu on the left - either from the default local templates or from pre-configured layout templates available under connected server. Template will be empty; drag and drop channels from the relevant section of the menu on the left onto the layout viewports to fill the grid with cameras. Channels' contents will be loaded automatically if it is available.

Click the layout menu  button in the upper-right-hand corner - just above the layout - and select *Save Layout* to save channel configuration as a new local or shared layout, or to overwrite any of the existing ones.

The screenshot shows a 'Save layout' dialog box with a dark theme. At the top, there's a title bar with 'Save layout' and a close button (X). Below the title bar, the 'Save as' section contains a dropdown menu with '[New layout]' selected. A subtitle 'Select layout to create or overwrite.' is below the dropdown. The 'Layout title' section has a text input field containing 'New Layout'. Below this, a subtitle 'Layout display name.' is followed by a horizontal line. There are two checkboxes: 'Save presets' and 'Shared', both currently unchecked. Below 'Save presets' is the text 'Save the last activated presets.' and below 'Shared' is 'Layout is stored on the server and is accessible by other users.' At the bottom right, there are 'Save' and 'Cancel' buttons.

There are the following additional options:

- Choose *Save Presets* if you wish to save the last activated preset for a PTZ capable camera together with the layout. If you do, the preset that was used for the PTZ camera will be remembered and loaded together with the layout, overriding any PTZ position changes, which have been made by any other user/action.
- To make the newly created layout available to any user connected to the same server, enable the *Shared* option in the layout properties and choose your desired settings: target server and layout group. Users who have the *View* permission for the target layout group will be able to see and use your layout; users with the *Administer* permission will be able to overwrite your layout using the same name.

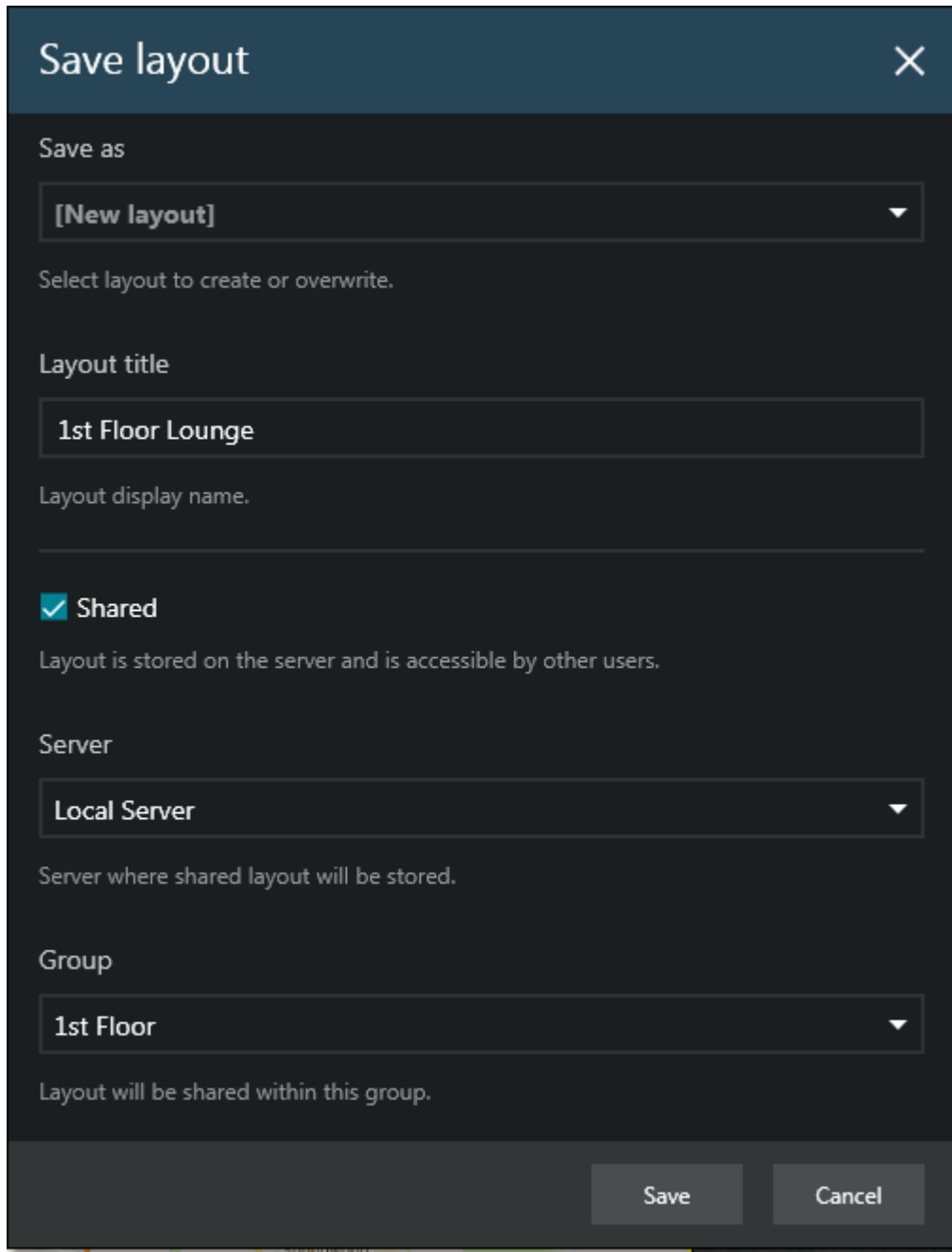
Click the *Expand*  button next to the local layout name in the *Resources* list to remove the layout.



You need at least one **layout group** to exist on the target server for you to be able to create shared layouts. Also, your currently logged user must have permissions to administer the target layout group.

In order to add layout groups, log into the target server via Luxriot EVO Console under an administrative account and go to *Layouts* section; details are available in your server administration user guide. Note that there are no built-in layout groups.


Luxriot EVO Monitor User Guide



The 'Save layout' dialog box is a dark-themed window with a title bar containing the text 'Save layout' and a close button (X). It contains several sections: 'Save as' with a dropdown menu showing '[New layout]'; a subtitle 'Select layout to create or overwrite.'; 'Layout title' with a text input field containing '1st Floor Lounge'; a subtitle 'Layout display name.'; a 'Shared' checkbox which is checked, with a subtitle 'Layout is stored on the server and is accessible by other users.'; 'Server' with a dropdown menu showing 'Local Server' and a subtitle 'Server where shared layout will be stored.'; 'Group' with a dropdown menu showing '1st Floor' and a subtitle 'Layout will be shared within this group.'; and at the bottom, two buttons labeled 'Save' and 'Cancel'.


Together with the layout, the following parameters are **saved** and **loaded** for each viewport, both for local and shared layouts:

- channel/map position within the layout template
- digital PTZ position
- aspect ratio
- notification panel
- PTZ preset (if enabled when saving PTZ)

The layout menu also allows you to send the currently displayed layout to any of the pre-configured video wall components. Click the layout menu  button in the upper-right-hand corner and select *Display on* and then choose desired video wall and target display number.



Luxriot EVO Monitor User Guide


Click the *Expand*  button next to any layout in the list to bring up the layout menu. From here, you can:

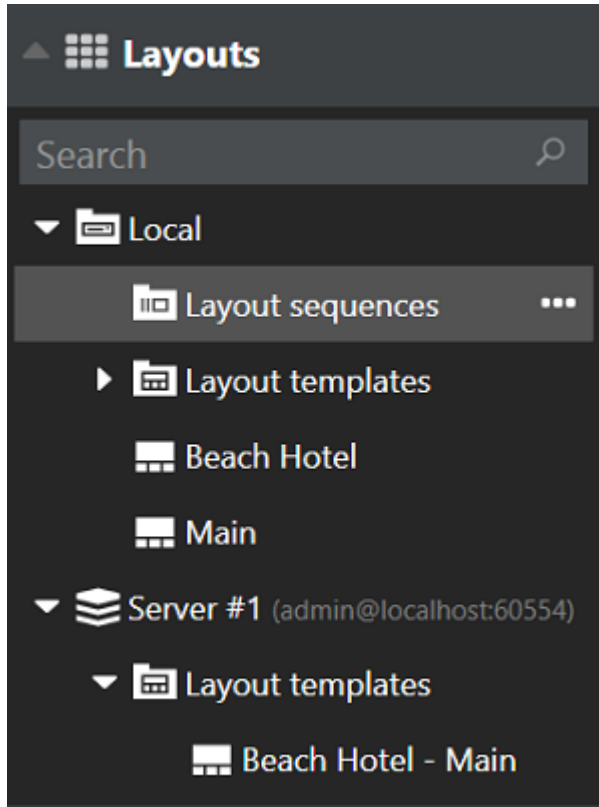
- **delete** the target layout, or
- send the target layout to the [video wall](#) screen.

Note that created layouts cannot be edited: if you wish to change the layout contents, load current layout contents by dragging and dropping it on the live view, make desired alterations and then overwrite existing layout by saving the current layout under the same name.

16 Layout Sequences

Multiple layouts can be organized and saved as dynamic sequences, i.e. 'layout slideshows'.

To create a sequence, click the  button near *Layout sequences* in the resource explorer on the left.



The *Create sequence* dialog box will appear.

Luxriot EVO Monitor User Guide

New Layout sequence

Layouts

Search

AVAILABLE LAYOUTS

Local ▸ 2nd Floor

Local ▸ 3rd Floor

Local ▸ Reception

Local ▸ Park

Local ▸ Entrances

Local Server ▸ 1st Floor Lounge

Layout sequence

SEQUENCED LAYOUTS

Local Server ▸ 1st Floor Lounge

Local ▸ 2nd Floor

Local ▸ 3rd Floor

Local ▸ Entrances

PAUSE, SEC

15

10

10

30

Sequence name

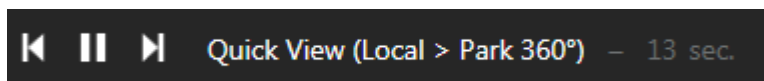
Quick Scan

Save


Cancel

Double-click layouts or drag and drop them to add/remove layouts to/from the sequence. For each layout, pause time can be specified separately; you can add each layout once or multiple times to appear in the sequence. If necessary, use the *Search* field in the upper-left-hand corner to find a layout by name.

Enter a name for the new sequence and then click *Save*. The sequence will appear in the resource explorer under *Layout sequences*; drag and drop it onto the main view area or double-click the name to activate it. The sequence will then start automatically; sequence controls will appear above the viewports, allowing you to switch between layouts manually and play/pause; also, the panel will also show the remaining time for the layout that is currently displayed.



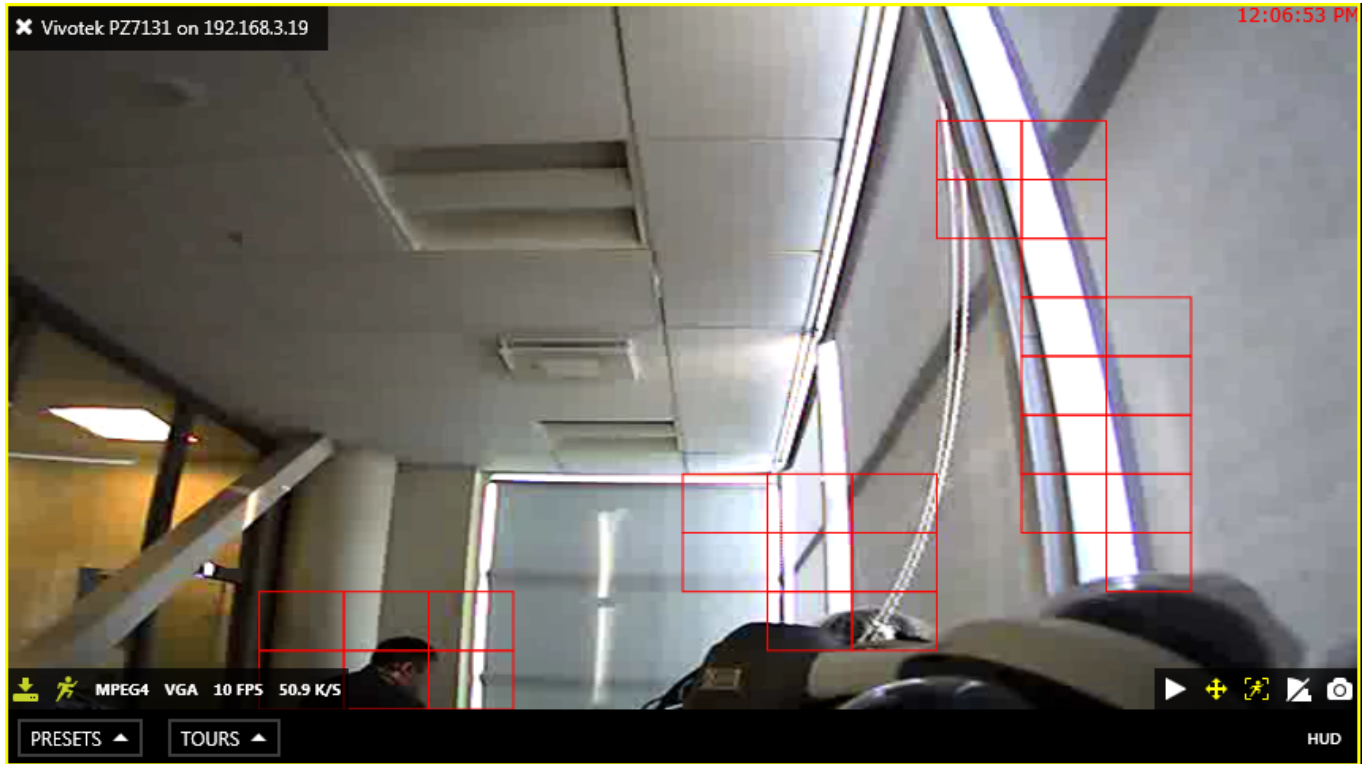
Click the |< and >| arrows to switch to the previous/next layout immediately; use the pause button to terminate playing.

To edit a sequence, click the  button near the sequence name in the resource explorer and select *Edit sequence*; to remove it from Luxriot Monitor configuration, select *Delete sequence*. Note that if you delete or modify the contents of the sequence currently being played, this will not affect current layout slideshow; in order to start the updated sequence version, simply start it again.

Luxriot EVO Monitor User Guide

17 Motion Overlay

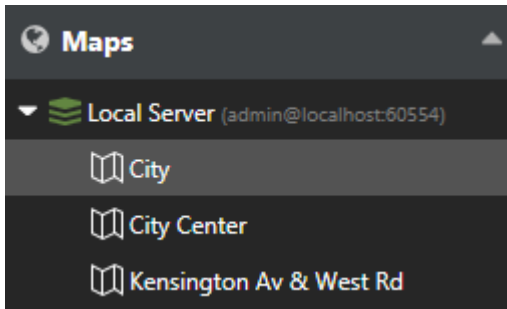
Click on your desired viewport and use the motion icon control in the bottom right corner to switch the motion grid overlay ON and OFF. This will only work if motion detection is enabled for the selected channel.



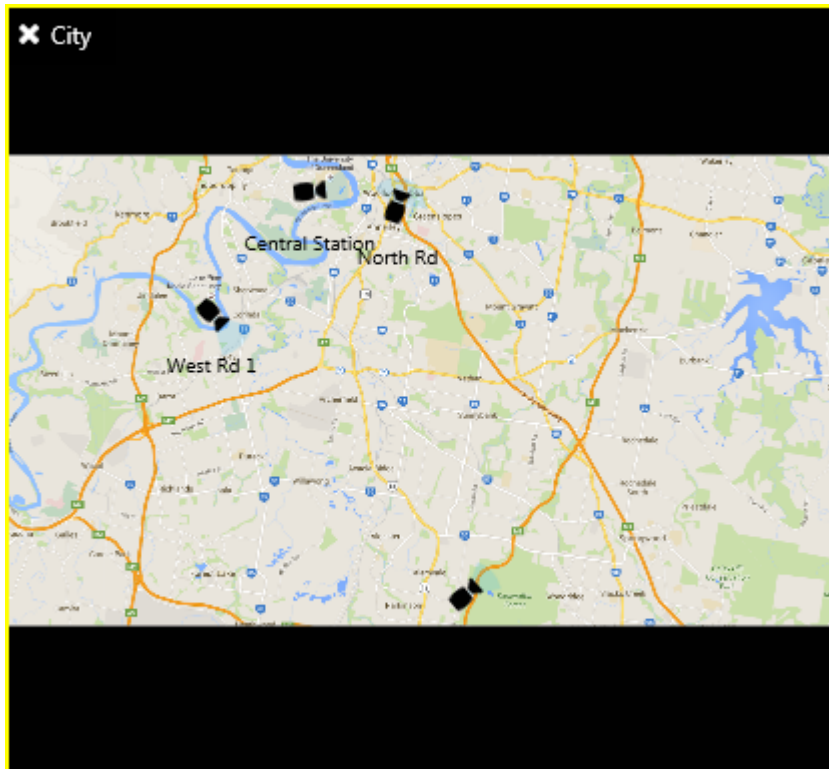
Luxriot EVO Monitor User Guide

18 Maps

Maps configured via Luxriot EVO Console can be viewed in Luxriot Monitor: simply drag and drop them from the resources list on the left to any viewport or use drag and drop to load them in the main application window in live or playback mode. Maps fill the viewports just like channels but, unlike channels, they do not have any footage or overlay controls. One map can be opened in one viewport or in many simultaneously.



Maps inside viewports can be digitally zoomed IN and OUT with the mouse wheel and moved around using the left mouse button (click and drag to move). Double-click inside any viewport with a map to switch to single camera view, then click again to return to the layout view.



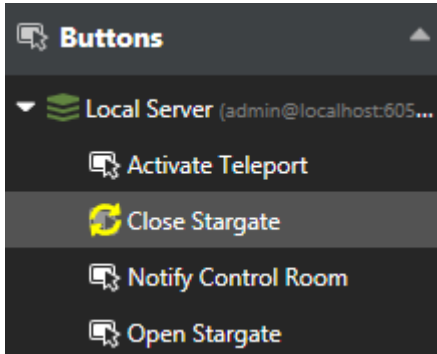
All the cameras shown on a map can be loaded in Luxriot EVO Monitor with a simple double-click. In order to pop up a camera:

- hover your mouse over the desired device on the map until it becomes highlighted with a pink circle
- double-click the target device in order to map it automatically on the first non-locked viewport within the current layout
- alternatively, drag and drop your desired device onto to viewport of your choice
- if the device stream is already present on the layout, it will blink with a green frame

Luxriot EVO Monitor User Guide

19 User Buttons

User buttons, as well as other types of resources from the connected servers, are available in the *Resources* panel on the left.



User buttons are created via Luxriot EVO Console; button behaviour is defined via Luxriot EVO Console using the *Event & Action Configurator*. There are three ways of using user buttons in Luxriot EVO Monitor:

- double-click any button in the list of resources to make it trigger the action assigned to it
- drag and drop any user button to a live view viewport to make the user button appear as an overlay control for your desired camera, then double-click it at any time to trigger the relevant action
- double-click user button markers on the maps (configurable via Luxriot EVO Console)

Note that a maximum of one user button per viewport is allowed; also, user buttons cannot be added to the viewports that contain maps. Instead, go to the map management section in Luxriot EVO Console and add user button markers to the desired maps to use them in Luxriot EVO Monitor.

Each time a user button is pressed, the corresponding log entry appears in the *Alerts* section of Luxriot Monitor.

Sequence explorer

Alerts

Library

Connection (1 servers)



File

Edit

View

Help

Search


LEVEL	TYPE	ALERT	DATE ADDED
 Info	System	User button "Close Stargate" successfully activated on server Local Server (admin@localhost:60554)	2/4/2016 1:40:44 PM
 Info	System	User button "Close Stargate" successfully activated on server Local Server (admin@localhost:60554)	2/4/2016 1:40:06 PM

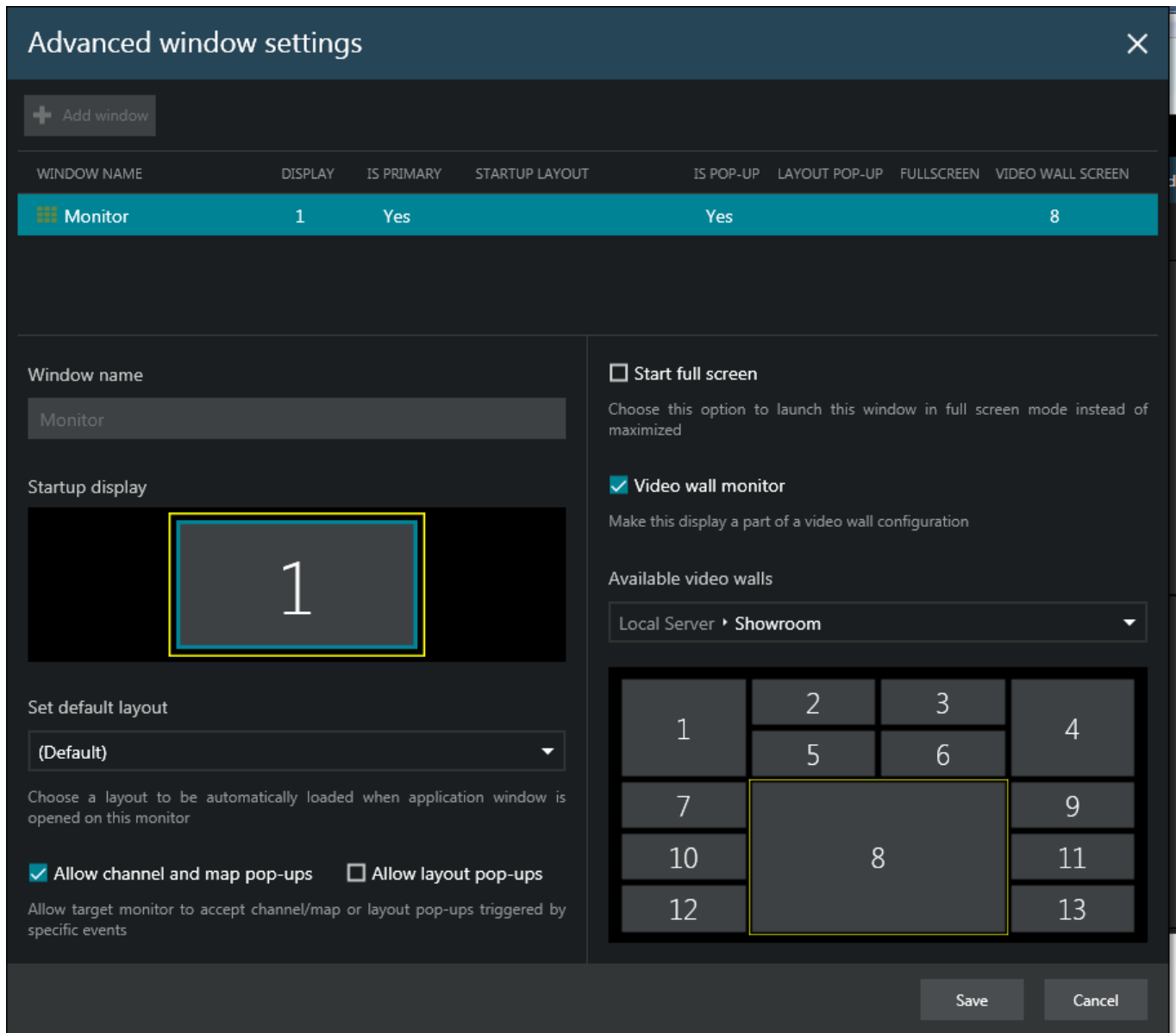
Luxriot EVO Monitor User Guide

20 Video Wall

Video wall configuration in Luxriot EVO is very flexible and it allows you to set up video output in virtually any physical display combination. Templates for video walls are set up via Luxriot EVO Console and then they become available in Luxriot Monitor, depending on the permissions of the connected user.

Video Wall Setup

To access window setup in Luxriot Monitor, open the *Live* section, click the multimonitor setup  button in the upper-right-hand corner - just under the main menu - and then click the *Advanced* button to bring up the configuration dialog box.



The 'Advanced window settings' dialog box is shown. It has a title bar with a close button. Below the title bar is a '+ Add window' button. A table lists the current window configuration:

WINDOW NAME	DISPLAY	IS PRIMARY	STARTUP LAYOUT	IS POP-UP	LAYOUT POP-UP	FULLSCREEN	VIDEO WALL SCREEN
Monitor	1	Yes		Yes			8

The dialog is divided into two main sections. The left section contains:

- Window name:** A text field with 'Monitor'.
- Startup display:** A visual representation of a display grid with a single cell labeled '1' highlighted with a yellow border.
- Set default layout:** A dropdown menu showing '(Default)'.
- Allow channel and map pop-ups:** A checked checkbox.
- Allow layout pop-ups:** An unchecked checkbox.

The right section contains:

- Start full screen:** An unchecked checkbox with a description: 'Choose this option to launch this window in full screen mode instead of maximized'.
- Video wall monitor:** A checked checkbox with a description: 'Make this display a part of a video wall configuration'.
- Available video walls:** A dropdown menu showing 'Local Server > Showroom'.
- Video wall layout:** A 4x4 grid of 16 cells. Cells 1-13 are numbered. Cell 8 is highlighted with a yellow border.

At the bottom right are 'Save' and 'Cancel' buttons.

The advanced window settings dialog box offers the following possibilities:

- create windows for the available displays and manage their properties
- assign default layouts to windows
- bind windows to video wall displays

Luxriot EVO Monitor User Guide

In the upper part of the configuration dialog box you can see the available window list. Already there by default is the main Luxriot Monitor window (marked as *Primary*), which cannot be deleted or renamed. More windows can be added, although the number is limited to the number of displays physically connected to the workstation. For each window, the following items are displayed in the summary list:


- display number
- primary or not (cannot be changed)
- startup layout, if set
- channel/map pop-ups allowed or not
- layout pop-ups allowed or not
- start fullscreen or not
- video wall screen number, if set

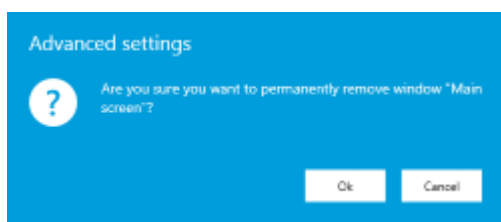
To add a new window, click the + *Add window* button in the upper-left-hand corner (when the window amount has reached connected display amount, the buttons becomes greyed out). Select the parameters of the new window and click *Save* for the changes to take effect.

All these parameters can be set for each window (including default primary window) in the dialog box section below window list:


- **Window name:** set window title to be displayed in the application title bar of each window
- **Startup display:** select a display to start the target window on (click to highlight with a yellow frame)
- **Set default layout:** pick a layout to be displayed on window startup; select *Default* if you do not want any layout to be displayed at Luxriot Monitor startup
- **Allow channel and map pop-ups*:** enable video/map popup on the target window as a result of event/action rule execution
- **Allow layout pop-ups*:** enable layout pop-ups on the target window as a result of event/action rule execution
- **Start full screen:** enable the target window to start in full screen mode; if this is disabled, the window will start up simply maximized
- **Video wall monitor:** make the target window a part of the video wall configuration; choose the video wall from the drop-down list below
- **Video wall** visual element: choose (click to highlight with a yellow frame) a video wall display to serve as the target window output

*Note that pop-up options can be selected one at a time: enabling channel/map pop-ups disables layout pop-ups and vice versa.

In order to delete a window, select it in the list and click the recycle bin  icon in the upper-right-hand corner; you will be prompted to confirm the action. Note that all the window settings will also be removed; once you have removed a window and clicked *Save* in the *Advanced settings* dialog box, the deleted window will also be closed.



Layout Output

Once application windows have been attached to the video wall displays, it becomes possible to send layouts directly to any video wall display. To do this, click the *Expand*  button near layout name in the resource list on the left and choose *Display on* -> *Video Wall* -> pick video wall -> pick display number. To send the currently displayed layout to the video wall, do the same thing from the layout menu in the upper-right-hand corner (above live view).



Luxriot EVO Monitor User Guide

21 Playback (Archive) Mode

Select *Playback* tab to switch to archive playback mode. Your current layout will be used and recorded video streams will be displayed for channels with enabled recording. If you wish to load footage from a different channel or channels, or use a different layout or layout template, use the *Resources* panel on the left:

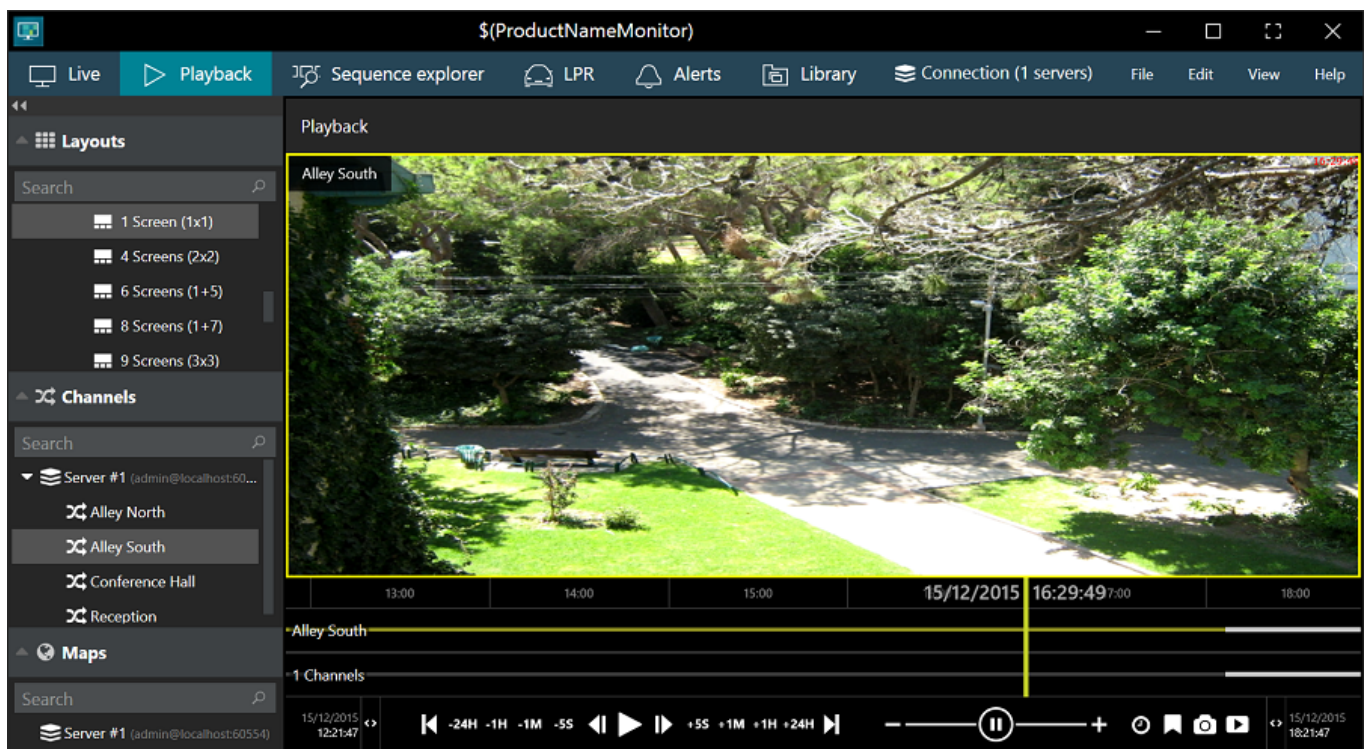
- Layouts: double-click your desired layout to load it
- Layout templates: double-click your desired layout template to load it, then double-click or drag and drop the channels of your choice to fill the viewports
- Channels:
 - double-click a channel to load it automatically within the current layout (first, empty viewports are filled, then non-locked channels are replaced one by one)
 - drag and drop a channel onto any viewport to load it there

All channels will be listed under the servers from which they originate; or, if you have chosen to merge resources in the [connection properties](#), they will form an alphabetically sorted list. Each channel can be clicked and expanded in order to access recordings of its main an/or secondary stream. All the footage having no associated active channels will be available under *Orphan archive tracks*.



For security reasons, it has been made impossible to erase recordings from individual channels and/or time periods. Recordings

Use the timeline and controls below to browse through recordings. For a multichannel layout, all channels will be played synchronously.



The following viewport overlay controls are available in the playback mode:

- Upper left:
 - **X** - close the stream and free the viewport
 - viewport **lock status**: unlocked (default) or locked; unlocked means that the video in this viewport can be replaced by other camera if you double-click or drag it from the *Resources*
 - camera name
- Bottom right: **controls**
 - Audio ON/OFF: disables or enables audio playback
 - [DPTZ](#) controls ON/OFF

Luxriot EVO Monitor User Guide

- aspect ratio (auto/stretch to fill viewport/original)
- [motion grid](#) ON/OFF



Right below the video stream, **timeline** is displayed:

- Time intervals show the timeline scale; click and drag left/right to move the timeline
- The **white** horizontal line shows recorded video
- The **cyan** line (a little bit wider than the white one) indicates motion
- The **blue** line (a little bit wider than the cyan one) shows recorded incoming [audio](#)
- The vertical line denotes current playback position

The video footage outline is shown twice: the upper outline displays the contents of the currently selected stream, with the corresponding channel name shown on the left; the lower outline shows a content summary for all the channels currently present in the viewport layout.



Luxriot EVO Monitor User Guide

The **playback mode controls** are located at the bottom of the window:

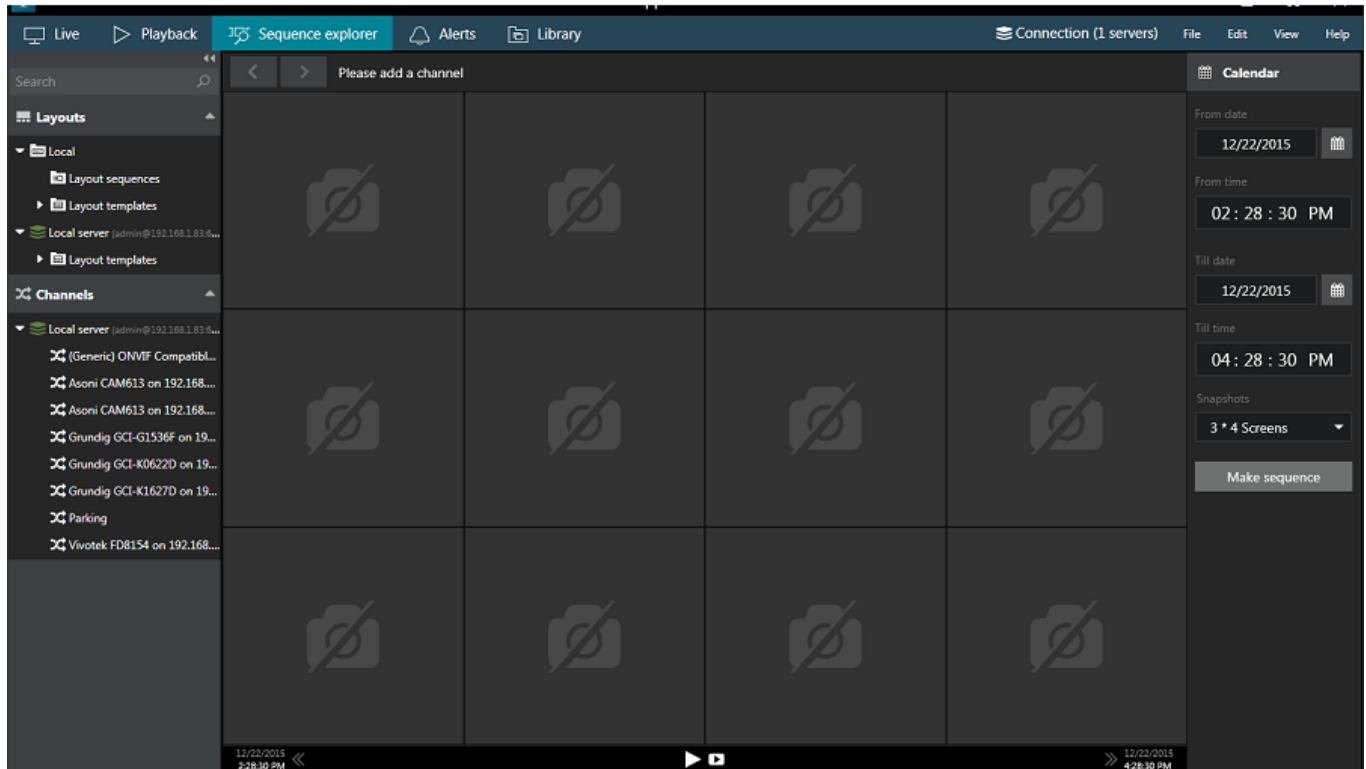
- far right and far left of the timeline:
 - timeline start and stop timestamps
 - use the <> arrows and drag left to zoom out/drag right to zoom in the timeline
 - yellow arrow indicates the location of the nearest footage if it is not present on the timeline at the time (this can happen, e.g., after zooming the timeline)
- playback controls:
 - use the *Play/Pause* button to start playback
 - use the <> arrows near the *Play* button to go one frame back/forward
 - -/+ steps: click to go back/forward with a step of 5 seconds, 1 minute, 1 hour or 24 hours
 - |< >| arrows: go to the very beginning/very end of the footage
- playback speed:
 - during playback, drag the blob to adjust playback speed from +/-0.5x to +/-32x
 - the *Pause* button duplicates the main pause control
 - when paused, set playback speed to start playing video (without pressing the *Play* button)
- additional controls:
 - clock button: go to a specific date and/or time
 - camera button: take a snapshot of the currently selected channel
 - video button: export a piece of video

Luxriot EVO Monitor User Guide

22 Sequence

The sequence explorer is an archive playback extension with additional tools for footage analysis. The whole recorded stream can be split into smaller pieces down to 2 minutes in length; each of these can be played separately or exported with a single click.

In the Luxriot Monitor upper panel, click the *Sequence* tab: the current main window will then display the sequence explorer with empty viewports.



Interface Overview

Interface elements have the following designations:

- **Calendar:** specify the time period to be analysed by entering date/time boundaries, and also set the viewport layout
 - date can be entered manually or selected from calendar view
 - time can be entered manually or adjusted by mouse wheel (select the value to be changed and use mouse wheel to increase/decrease it, while keeping the mouse cursor over the field)
 - minimum time period is 120 seconds
 - available viewport layouts are: 3x4 (default), 3x5, 4x3, 4x6, 6x4, 5x5 screens
- **Top panel:** <> arrows enable users to browse viewing history within the channel in use; the name of the channel being used is displayed
- **Main window:** displays video clip sequence with corresponding controls; empty viewports mean that no footage is available for the time period selected
- **Bottom panel:** contains global sequence controls for the whole currently displayed period (and **not** the selected sequence elements)
 - the << and >> arrows on the sides enable users to load the previous/next portion of the footage sequence, with time period equal to the one set in the *Calendar*
 - next to the arrows, the date/time boundaries of the current video portion are shown
 - *Play* button in the centre of the panel will open current video portion in the *Playback* mode

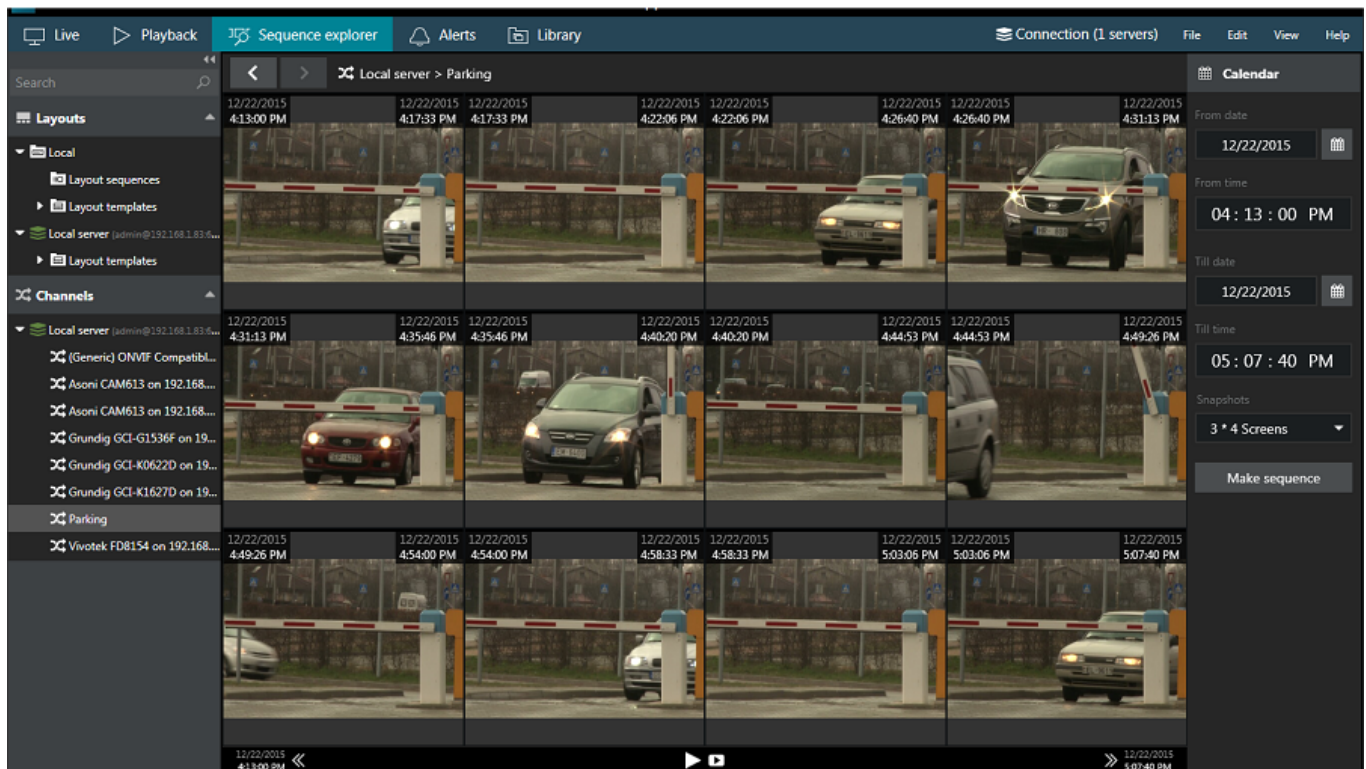
Luxriot EVO Monitor User Guide

- *Video* button in the centre of the panel brings up the *Video export* dialog box

Make Sequence

Drag and drop the desired channel from resources onto the main window; the camera name will appear at the top. Note that the sequencing works with one channel at a time, so if you drag and drop another channel onto the explorer window, all previous changes will be discarded.

Select sequence timing in the calendar panel on the right and then click the *Make sequence* button. Video footage from selected time range will be divided between all viewports, so that all of them will contain video clips of equal duration. For instance, if the selected time range is 2 hours and a 3x4 layout is set, each viewport will contain a 10-minute video clip: $(2 \times 60) / 3 \times 4 = 120 / 12 = 10$ minutes.



From this point onwards, you have several options for creating a new sequence:

- enter a new time period on the *Calendar* panel and click the *Make sequence* button
- select one or multiple sequence elements and click the *Make sequence* overlay control (see the control descriptions below)
- double-click a single sequence element to split it into a new sequence

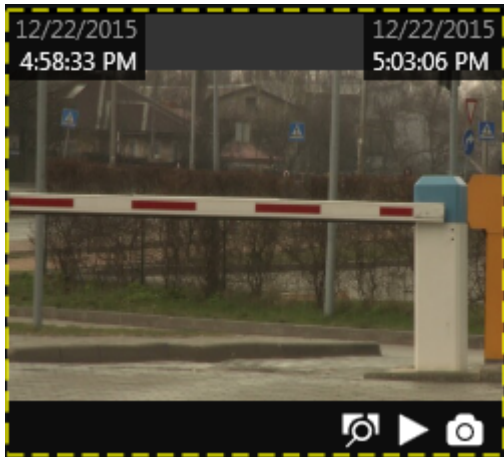
If you choose to build a new sequence out of one or multiple sequence elements, their date/time boundaries will be set as new boundaries, and the video clip in the resulting sequence will be of shorter duration. In this way, any footage can be split into smaller and smaller chunks down to two minutes, facilitating footage analysis process and making it easy to find the scene of interest within a larger fragment of footage.

Use the << and >> arrows on the bottom panel to go back and forth along channel timeline. The size of the jumps back and forth will be equal to the base time period set in the *Calendar*.

Sequence Controls

Viewport overlay controls are available for each sequence element. Click any piece once to select it; click one screen once and then click another screen to select a series of fragments. Selection border style will help you control your actions: a **dashed** line denotes a single click, **solid** line appears after the second click. As a result, you will always know, which selection stage you are on when selecting multiple screens.

Luxriot EVO Monitor User Guide



Once you have selected one or a set of fragments, overlay controls in the bottom right corner of the selection offer the following possible actions:

- **Magnifier** button: make a new sequence out of selected fragments; use the *History* controls <> in the upper panel to go back
- **Play** button: play selected footage in [archive playback](#) mode
- **Video** button: export video from selected time range (no additional *Set time range* window is displayed)



Timestamps in the top-left and in the top-right-hand corners of each viewport represent time range of the contained footage fragment. In case multiple screens are selected, the intermediate timestamps are skipped and time frames for the multi-fragment footage portion are displayed.

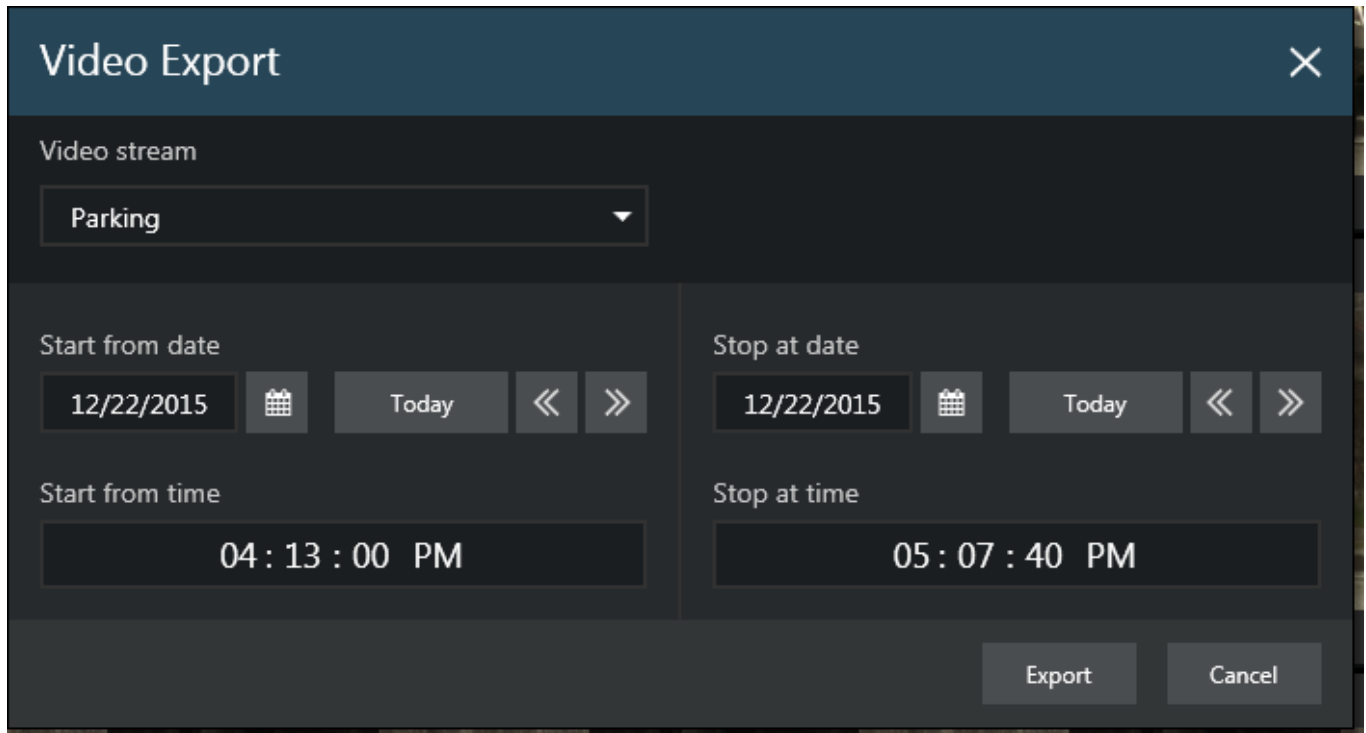
Playback

Click the *Play* button on the bottom panel to open the whole inspected footage portion in the archive playback mode. The equivalent button on each of the selected sequence fragments will open just that specific fragment for playback. Playback operation is exactly the same as for usual archive viewing and it is explained at length in the Archive Playback topic.

Video Export

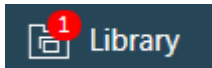
Click the *Video* button in the bottom panel to bring up the *Video Export* dialog box and set your desired time range for exported footage; channel selection is limited to the one channel open at the time in the sequence explorer.

Luxriot EVO Monitor User Guide



The 'Video Export' dialog box is shown with a dark blue header and a close button (X) in the top right corner. Below the header, the 'Video stream' section contains a dropdown menu with 'Parking' selected. The 'Start from date' and 'Stop at date' sections each feature a date input field showing '12/22/2015', a calendar icon, a 'Today' button, and left/right navigation arrows. The 'Start from time' and 'Stop at time' sections have time input fields showing '04 : 13 : 00 PM' and '05 : 07 : 40 PM' respectively. At the bottom right, there are 'Export' and 'Cancel' buttons.

The *Video* button overlay control in the fragmented sequence screens will automatically export video from selected time range without additional prompts. In either case, the exported video will appear in the [Library](#).



Sequence explorer works with the streams based on the time intervals. If you want a more intelligent archive analysis tool, go to [Smart Search](#) to base your search on motion in certain regions.

Luxriot EVO Monitor User Guide

23 Smart Search

Along with regular [archive playback](#) and [sequence exploring](#), Luxriot Monitor application provides the **smart search** feature, which allows you to specify a region of interest and let software search for motion events in the defined area based on the existing motion detection (MD) metadata. This advanced search option is available for all Luxriot EVO servers and editions.



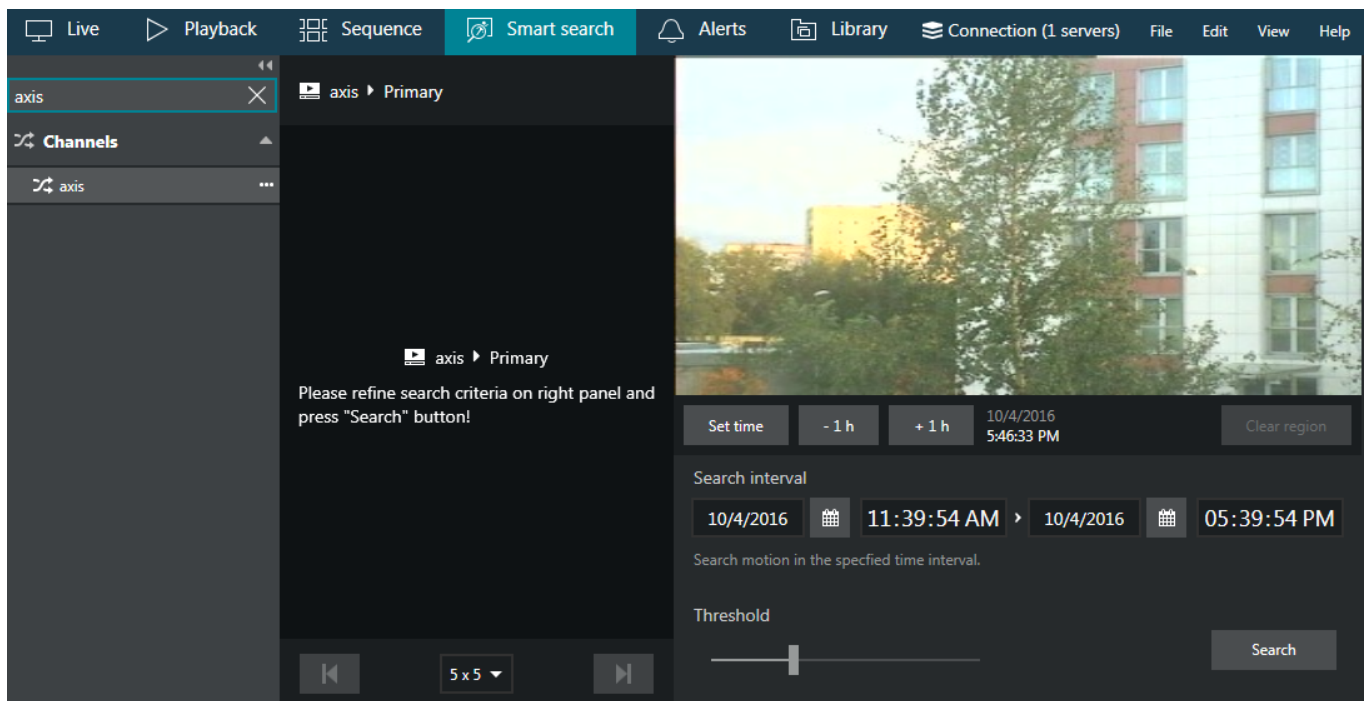
There are two types of motion analysis operation: **grid** and **area** (frame). Grid type detection is implemented for software-side motion analysis (both High Performance and High Accuracy modes), while most devices send their motion detection metadata in the form of areas (frames), this is, the software only knows if the motion was present in the configured zone, and exact location of the motion in that frame is not available.

Understandably, precise results of smart search can be only obtained for grid-like detectors. Searching through an area-type stream by motion region will give you motion events whenever motion has been detected in the configured detection areas. In order to get better search results with device-side detectors, please adjust the motion detection zone via device Web interface.

In order to start using smart search, click the corresponding tab on the upper panel of the main Luxriot EVO Monitor window.



When you open Smart Search for the first time since Luxriot Monitor application startup, the main viewing area will be empty. The resources menu on the left will contain all recorded streams, just like in regular playback: simply drag and drop your desired video stream onto the viewing area in order to start working with it. The panel on top of the viewing area will have your selected channel and stream name displayed then. The loaded stream will still be there if you switch to some other tab and then go back to Smart Search.



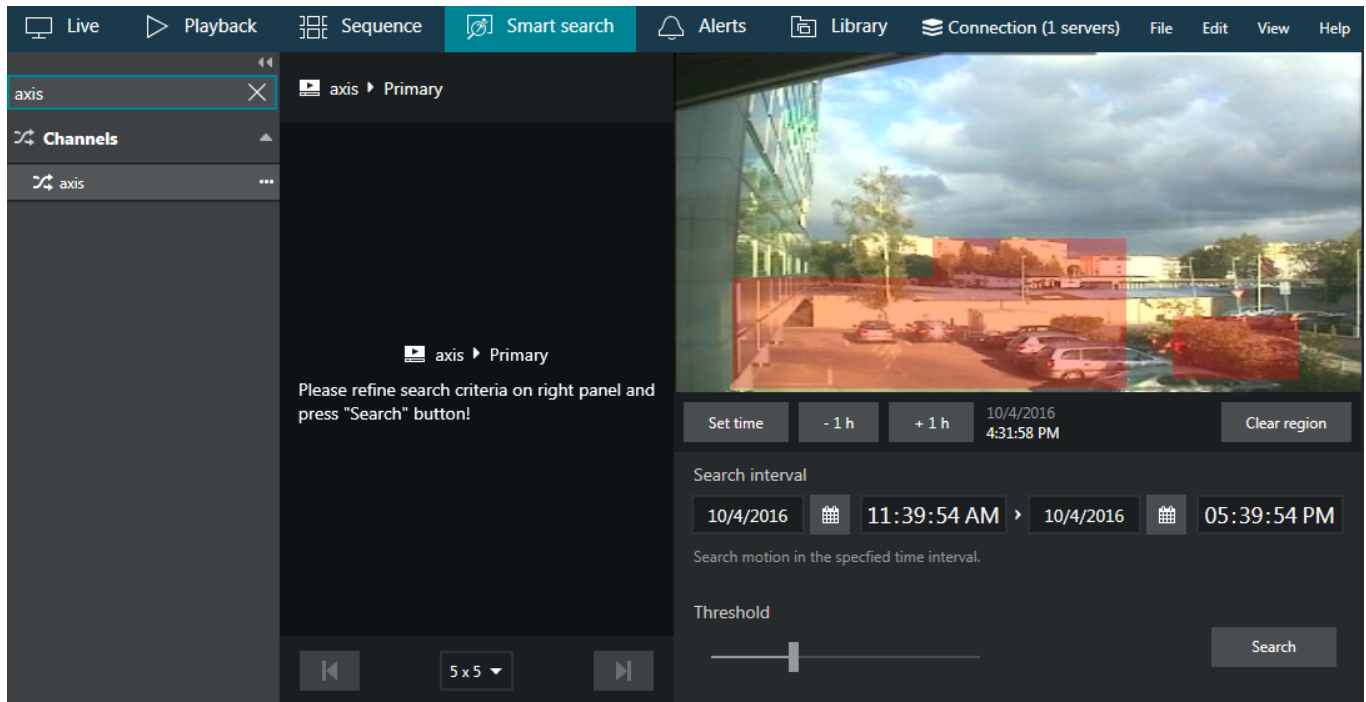
Search Parameters

The search procedure consists of **three main steps**: define the region of interest, set the time period and sensitivity, and analyse the results.

Luxriot EVO Monitor User Guide

Once you have selected the stream for analysis, the stream preview will appear in the upper right corner as a static picture. You can use the buttons below the picture to choose the point in time for the preview: this comes handy in case the stream comes from a PTZ capable device, or if the underlying device has been moved/replaced. Choosing a correct scene is crucial for obtaining the correct search results.

Click and drag on the picture to draw a rectangular **region of interest**. You can mark multiple regions and also combine them to make them overlap, creating a more complex shape. Press the *Clear region* button to discard all areas and start drawing again. If no region is specified, motion in any



Afterwards, **set the search interval** using the controls below the picture. You can enter the date manually or use the calendars to choose a specific day. To manipulate time, click the desired time units and then either enter the numbers from your keyboard, or use your mouse wheel, while still hovering the mouse cursor over the timestamp.

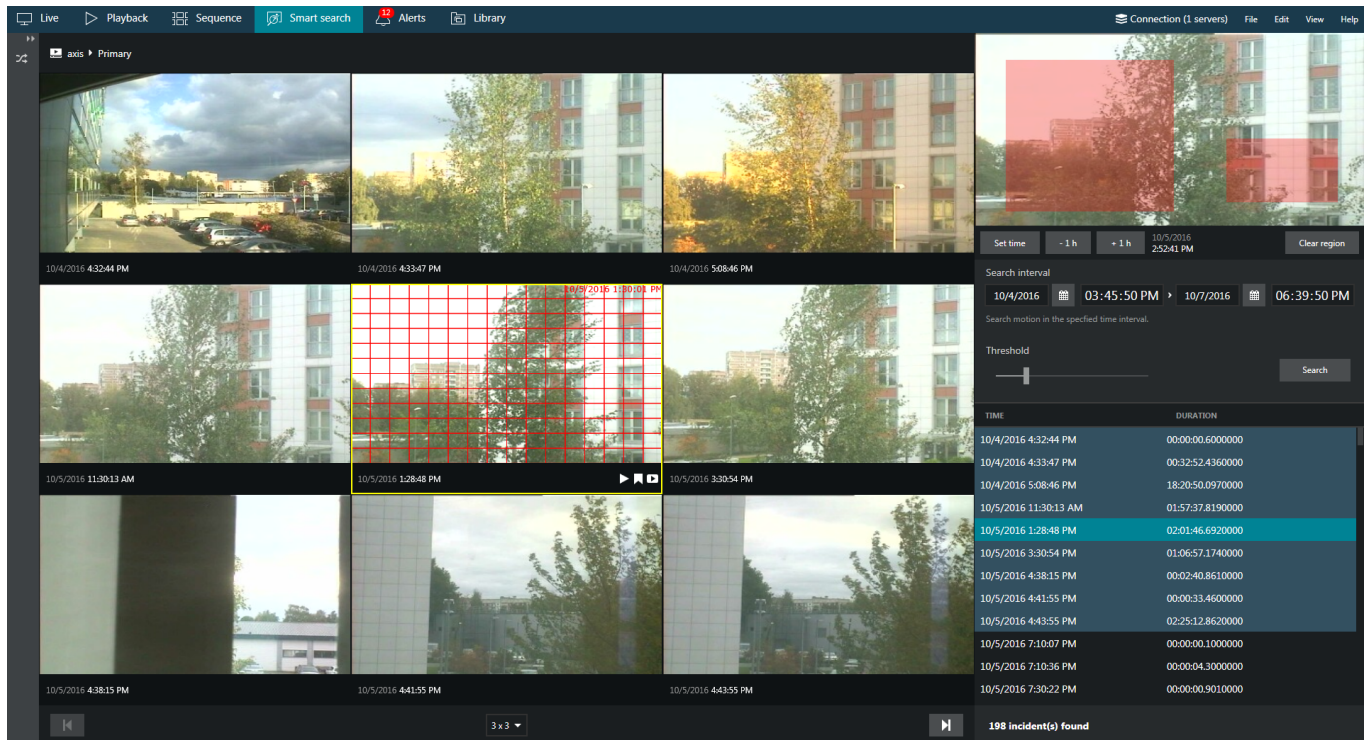
Next, set the desired **threshold** for the motion absence by dragging the slider. Threshold range is 5..60 seconds and it defines how much time should be there between two subsequent motion events for them to be reported as a single event. For example, if you set the threshold to 5s (minimum), all consecutive motion events with gaps between them smaller than 5s will be reported as a single search result, and events having more than 5s between them will be presented as separate results.

When ready, press the *Search* button to filter the motion events according to your settings. Smart **search results** will appear in the central viewing area; if the specified time interval is large, the results may appear not at once but rather one by one, as the search progresses.

Investigation

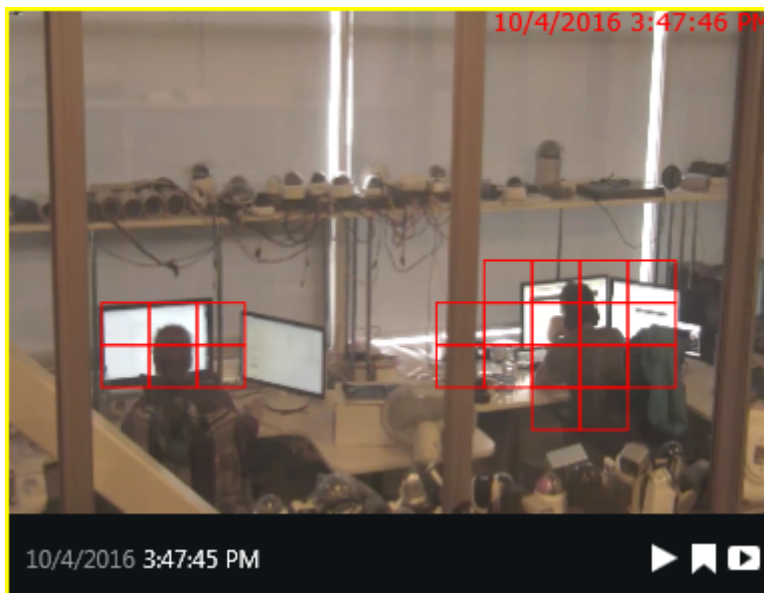
Each of the search results will be presented as a preview picture with a timestamp below, the timestamp designating the beginning of the sought-for motion event. At the same time, all results will be listed on the right-hand side, with the currently displayed results being highlighted. The list also shows the motion event duration for each of the results. In the very bottom of the list, the total number of results will be displayed.

Luxriot EVO Monitor User Guide



You can change the presentation grid by choosing the desired **layout** in the drop-down list below the central area: available layouts range from 3x3 to 6x6 viewports. If there are more results than a single layout can contain, left and right - |< and >| - arrows will become highlighted, allowing you to **browse** back and forward. Notice how the highlighted item set changes as you browse. You can scroll the list and choose any result from the non-highlighted items; the corresponding portion of results will be then loaded in the viewing area.

Click the event of interest - either a row in the right-hand list or a picture in the central viewing area - to start working with it: the selected video clip will be looped and played back continuously.



The overlay control buttons in the bottom-right-hand of each viewport allow you to perform the following actions (from left to right):

- *Play* button: go the regular *Playback* mode to view the search result in a single channel mode
- *Bookmark* button: click to add a [bookmark](#) at the beginning of the selected video clip
- *Video export* button: selected video clip will be automatically exported

Luxriot EVO Monitor User Guide

For just any video clip in the results you can go to the regular playback mode with a single click of the *Play* button overlaying the clip; to go back, simply click the *Smart Search* tab to get back right where you left off.

When you export a video clip from the search results, it is exported automatically with your pre-defined video export settings, without the need to confirm the time range. You will still be asked for the file name if you have not [chosen to use pre-defined settings](#). In order to export longer video clips, either go to the regular *Playback* mode by choosing the corresponding tab in the top panel, or select a higher *Motion absent duration* threshold in the smart search parameters.

24 Bookmarks

Luxriot EVO Monitor offers an opportunity to mark any specific moment in time so that it can be easily found in the *Playback* mode later. It is possible to add bookmarks from [live](#), [instant playback](#), regular [playback](#) and [smart search](#) modes; bookmarks are displayed and can be searched through in the regular playback mode.



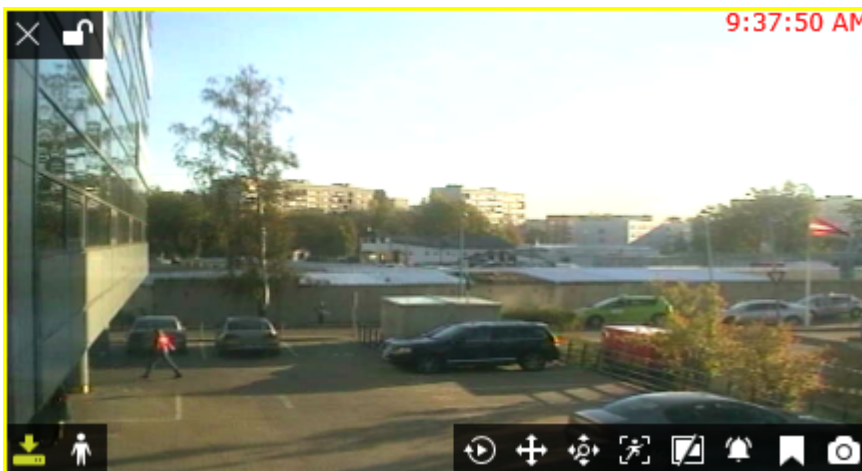
The bookmark overlay control may be absent in the following cases:

- your currently logged user does not have permissions to add bookmarks - in this case, the bookmark control may be absent for specific channels only
- the control had been hidden via [application settings](#) (by default, it is enabled)

Also, the bookmark button will be grayed out for orphaned archive tracks in *Playback* mode (orphaned tracks are recordings that have no active channel associated with them).

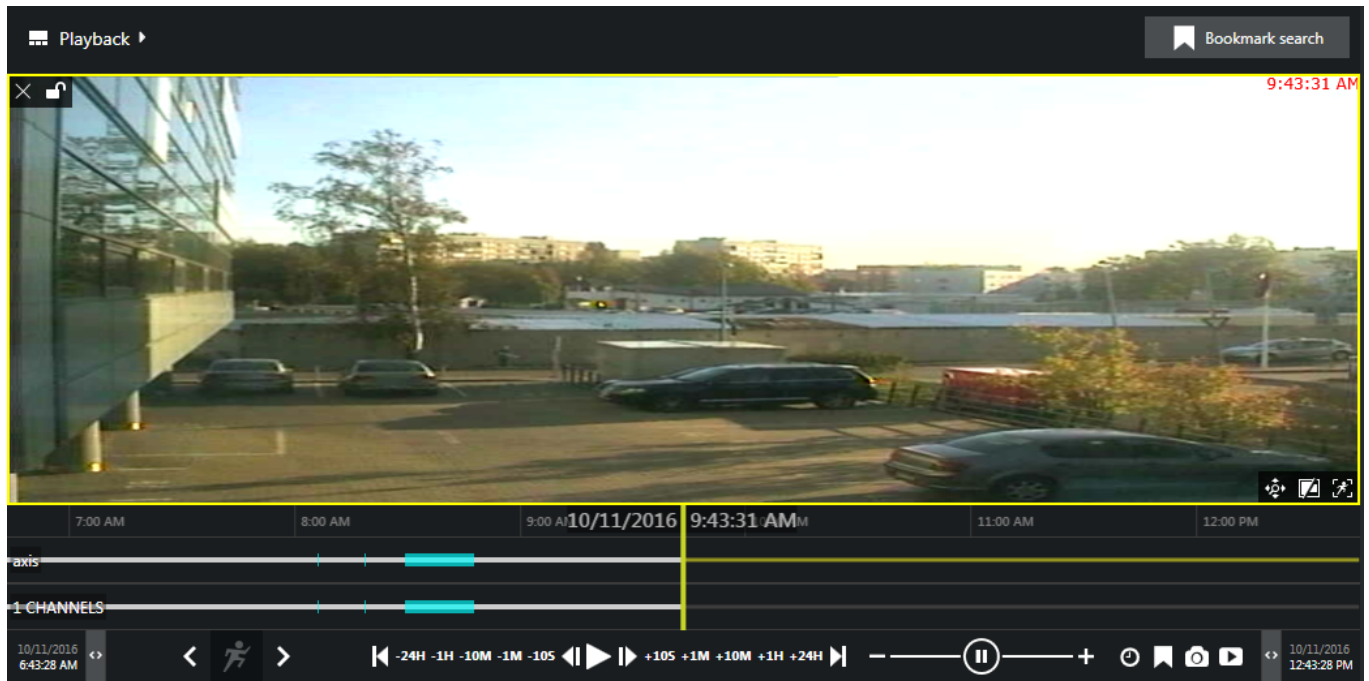
Add Bookmarks

Select your desired channel by clicking it in live, playback, instant playback or smart search mode.



Among the **overlay controls** in the bottom-right-hand corner of the channel, locate the bookmark icon  and click it once. In playback mode, the *New bookmark* button is situated in the bottom-right-corner of the whole viewing area, near snapshot and video export controls.

Luxriot EVO Monitor User Guide



Bookmark dialog box will appear, offering you to fill in the details. Several details are available in the dialog box:

- *Channel*: displays the currently selected channel name, cannot be changed
- *Time*: bookmark time - inserted automatically but can be adjusted (see details below)
- *Title*: bookmark name, e.g., *Motion* or *Person detected* (empty by default), which can be later searched by
- *Description*: user comments - a detailed description of what has happened (empty by default)

Bookmark **time** is automatically inserted using the following logic:

- *Live mode*: the moment of time when you pressed the bookmark button
- *Instant playback*: the currently played moment, the play marker position
- *Playback*: the currently played moment, the play marker position
- *Smart search*: the incident timestamp

and the timestamp in the bookmark details can be changed at this step by using the calendar or manual insertion (keyboard) for date and click+mouse wheel or keyboard for time.

While you are adding a bookmark, playback (regular or instant) will proceed in the background without being paused.

Luxriot EVO Monitor User Guide

Add bookmark ×


Channel

axis

Bookmark channel.

Time

8/24/2027



09:43:31 AM

Bookmark time.

Title

Car arrived

Bookmark title.

Description

Boss is in da house


Bookmark description.

Save

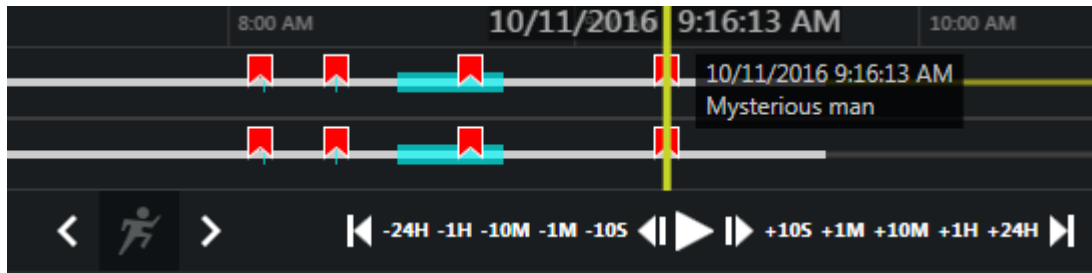
Cancel

After you have filled in all the desired fields, click *Save* to add the bookmark at the selected moment in time. Your newly created bookmark will be available in the bookmark search in *Playback* mode from now on. Also, all bookmarks are visible on the timeline: these look as tiny **red flags**. You can hover your mouse cursor over any of the bookmarks to get a tooltip with the bookmark timestamp and title. In order to see the description, double-click any bookmark on the timeline.

Search Bookmarks

All the added bookmarks will be visible in **regular playback** and also in the **instant playback** modes, each bookmark being denoted as a  red flag. Hold your mouse cursor over the bookmark to see its name and exact time; double-click a bookmark to open a detailed description in a separate dialog box.

Luxriot EVO Monitor User Guide



In order to search for and view the existing bookmarks added both by you and other users, go to the **playback** mode by switching to the *Playback* tab on the upper panel of Luxriot EVO Monitor. Choose a layout of your preference either by loading an existing one or by filling the viewports with channels of your choice.

In the upper-right-hand corner, press the *Bookmark search* button in order to open the bookmark search panel.

Here, you have two options: search by bookmark creation time (i.e., when the bookmark was added, regardless of its location on the timeline) and/or by actual bookmark timestamp (its position within the timeline). Define the search parameters in the following manner:

- choose whether you want to search by bookmark time, its creation time, or both at the same time
- set desired date and time range for bookmark time, its creation time, or both
- select a channel from the drop-down list (one of those present in the layout)
- if you wish to search for bookmarks for all channels present in the layout, choose the "All visible in layout" option
- optionally, enter a bookmark title or a part of it (without wildcards) to refine your search results

When you have entered all the search conditions, press the *Search* button to obtain the bookmark list.

Luxriot EVO Monitor User Guide

Bookmark search

☒ Search by bookmark time

10/6/2016

12:32:30 PM

>

10/7/2016

12:32:30 PM

Search bookmarks in the specified time range.

☐ Search by creation time

10/6/2016

12:32:30 PM

>

10/7/2016

12:32:30 PM

Search bookmarks created in the specified time range.

Channel

All visible in layout (2 channels) ▾

Bookmark channel.

Title

room

Bookmark title.

Search

BOOKMARK TIME	TITLE	CHANNEL
10/7/2016 12:31:06 PM	Motion in the room	axis
10/7/2016 12:31:02 PM	Motion in the room	axis
10/7/2016 12:10:02 PM	Motion in the room	axis

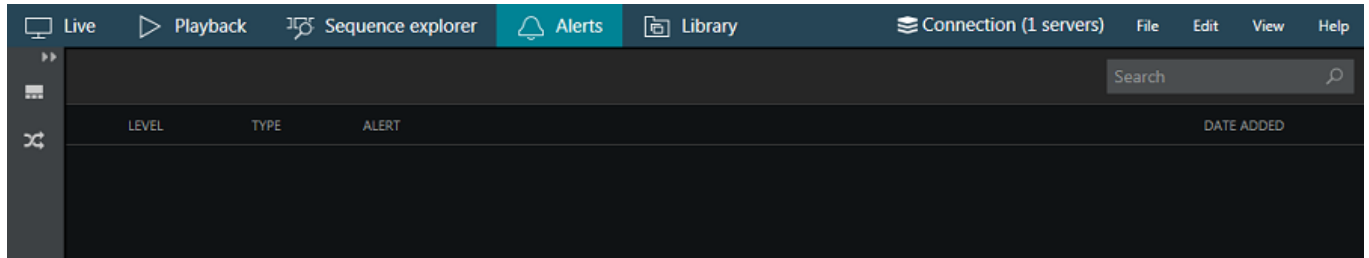
Search results will appear in the list in the bottom of the search panel. **Single-clicking** a bookmark will auto-locate it on the timeline, allowing you to see the exact moment, to which the target bookmark has been bound: click the *Play* button on the archive playback panel to start playback.

You can also **double-click** any bookmark either in the list or on the timeline to open it and view its contents in a separate dialog box. Understandably, you will not be able to change any bookmark details.

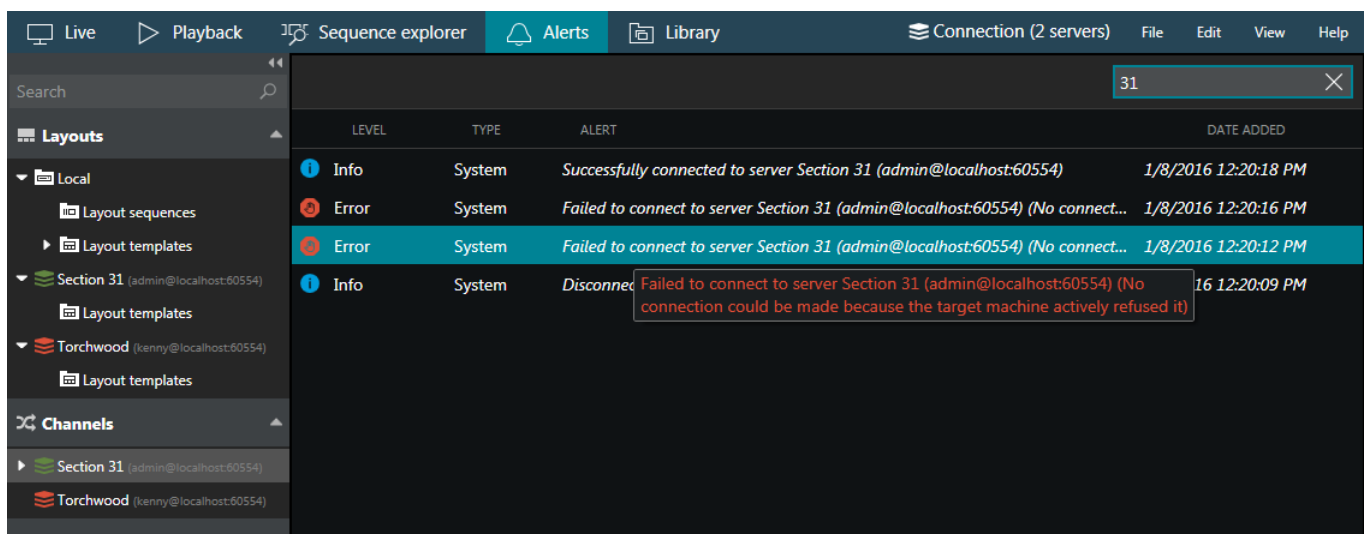
Luxriot EVO Monitor User Guide

25 Alerts

The alerts section of Luxriot Monitor features server notifications, e.g., logon/logout, camera events, as well as miscellaneous errors that arise during operation: stream errors, server connectivity issues, device connection errors and others.



Use the *Search* field in the upper-right-hand corner to filter alert messages.



Along with type and source, alert message and time are shown for each entry. If the message is too long to be displayed in full, hover the mouse cursor over it to read full message text.

26 Video & Snapshot Export

Video clips, frame sequences and individual pictures can be exported in order to be viewed later without help of Luxriot software.

Snapshots

A snapshot can be taken at any time in live view, sequence explorer, instant playback and regular playback modes. To save a snapshot, click the Camera button in the overlay controls or bottom panel controls.

The frame will be saved with your pre-defined frame export settings, if this is enabled in the [Application settings](#); otherwise, you will be prompted to specify stream properties and export directory.

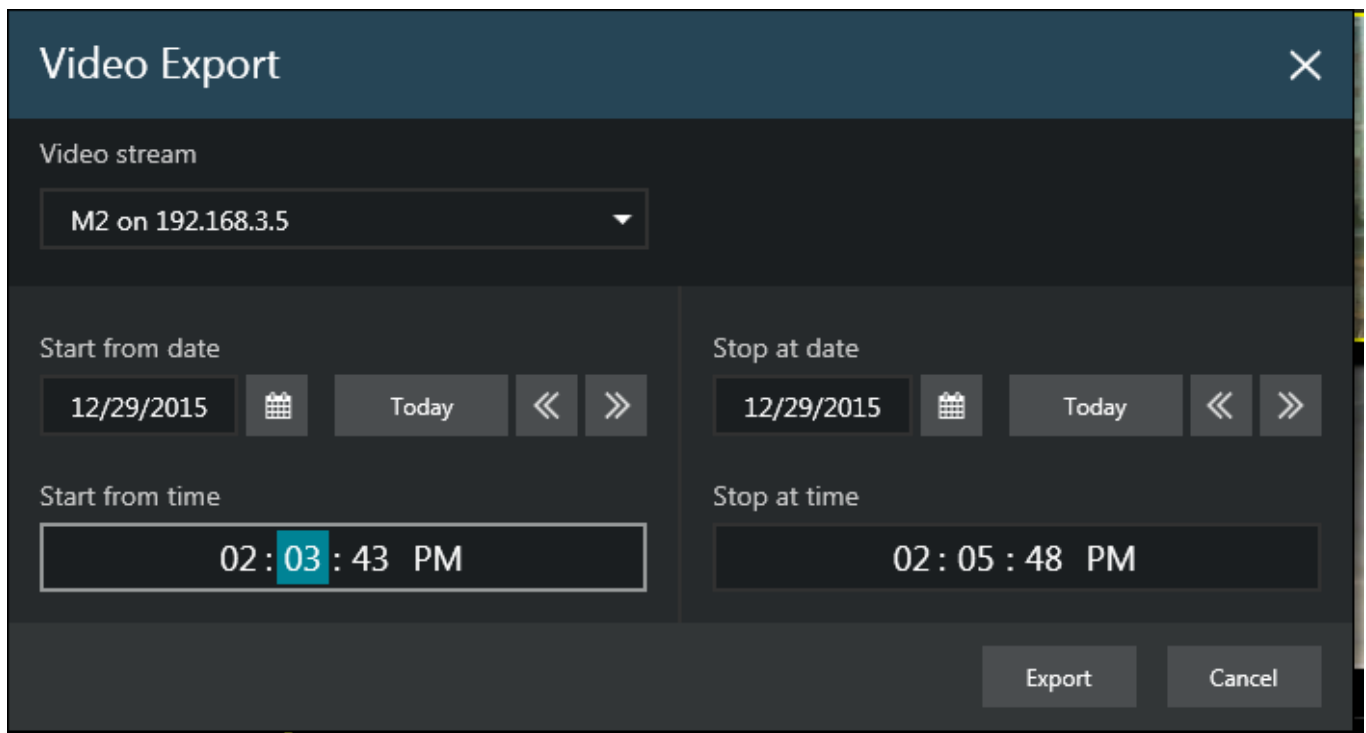
Video Export

Video can be exported automatically (without additional dialog box prompt):

- from [Sequence Explorer](#), by clicking *Video* button in the viewport overlay controls: selected fragment(s) will be exported and displayed in the [Library](#) immediately;
- from *Instant Playback* mode, by clicking *Video* button in the viewport overlay controls: the most recent currently loaded footage will be exported at once (last 5 minutes, by default).

A video export dialog box with additional settings can be launched in the following ways:

- from *Playback* mode, by clicking the *Video* button in the bottom right panel (the channel choice is limited to those that are currently displayed);
- from *Sequence Explorer*, by clicking the *Video* button in the centre on the bottom panel (channel choice is limited to channels currently being viewed).

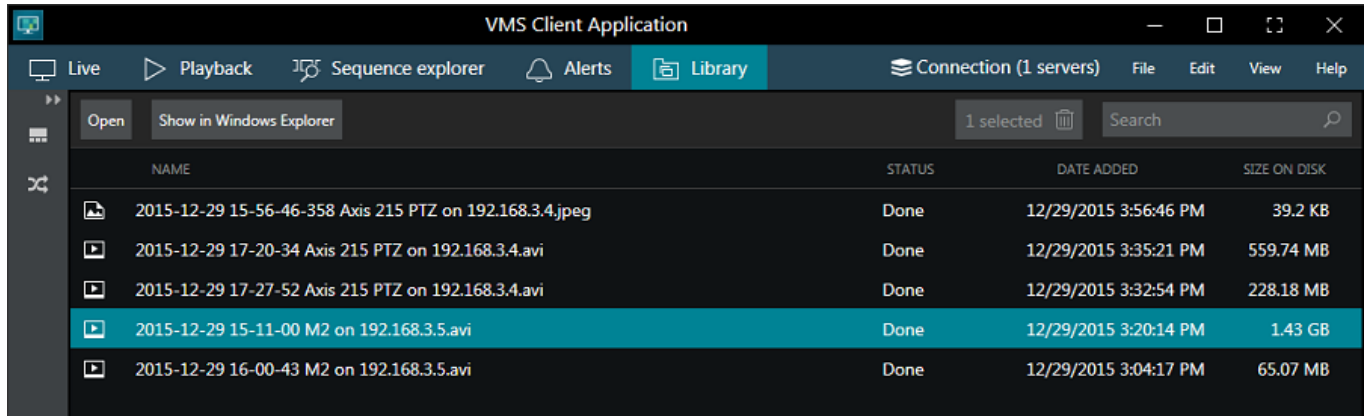


Select your desired date and time boundaries for the export of the footage: dates can be picked from the drop-down calendars, times can be adjusted by clicking hours/minutes/seconds and then scrolling up/down with mouse wheel. When you are ready, click the *Export* button; the video file will be saved with your pre-defined video export settings, if enabled; otherwise, you will be prompted to specify the stream properties and export directory.

Luxriot EVO Monitor User Guide

27 Library Section

The library displays all exported video files and snapshots that are available, as well as ongoing export. The file list is refreshed upon Luxriot Monitor startup, so library entries for deleted files may exist in the list until Luxriot Monitor restart.



Files that are still being exported will be shown in grey, with the current export percentage shown in the *Status* field.

Click the *Open* button on the upper panel or just double-click any file to open it with your OS default media player for AVI/JPEG file formats; use the *Show in Windows Explorer* button to display the export directory containing the selected file.

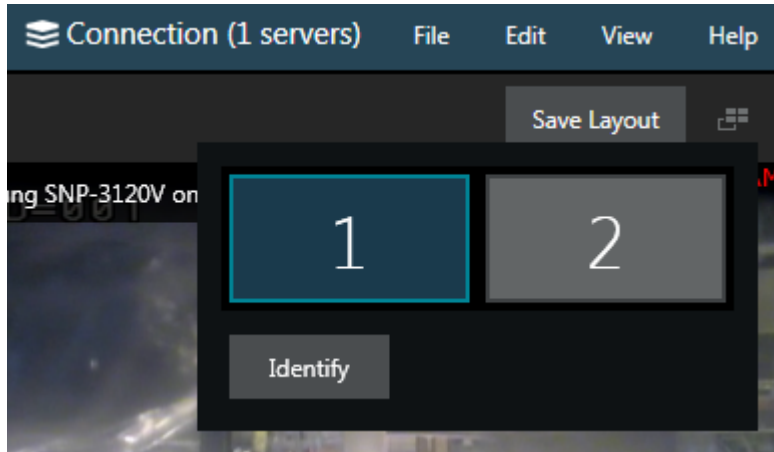
To remove files both from the library and from the hard disk, select one of multiple files and click *Delete* button on the upper panel. Use the *Search* field in the upper panel to filter the items.

Luxriot EVO Monitor User Guide

28 Multimonitor Setup

Click the *Multimonitor* button in the upper-right-hand corner of the live view, next to the *Save layout* button, to bring up the display selection menu.

Luxriot Monitor automatically detects computer display configuration directly from Windows display settings: click *Identify* to show the display numbers on all monitors - this will be helpful if there is a large number of displays. To change your multimonitor configuration, go to the *Windows Control Panel -> Display -> Screen Resolution*.



Luxriot Monitor automatically detects which screen it is currently on: this display is marked blue and it is not possible to create any child windows on it. Click on any other empty display (marked gray) to open a new live view window there: the child window will be opened maximised, with the display number shown in the application header. The controls in the upper-right-hand corner give the option to enter fullscreen or to close the extension windows.


For the multiple display configuration, the following logic is applied:

- the main Luxriot Monitor application window acts as a parent window, in the sense that:
 - child windows for extension screens can be created and closed independently
 - when the main application window is closed, all other windows are closed as well
- the main window can be located on any screen
- only one application window can be opened per screen
- child windows are maximized to fill all screen
- child windows do not have menus or panels, just live view mode
- double-click layouts and/or channels to load them in the main application window
- drag and drop layouts and/or channels from the main window list to extension monitors


Luxriot EVO Monitor User Guide

29 Keyboards & Joysticks

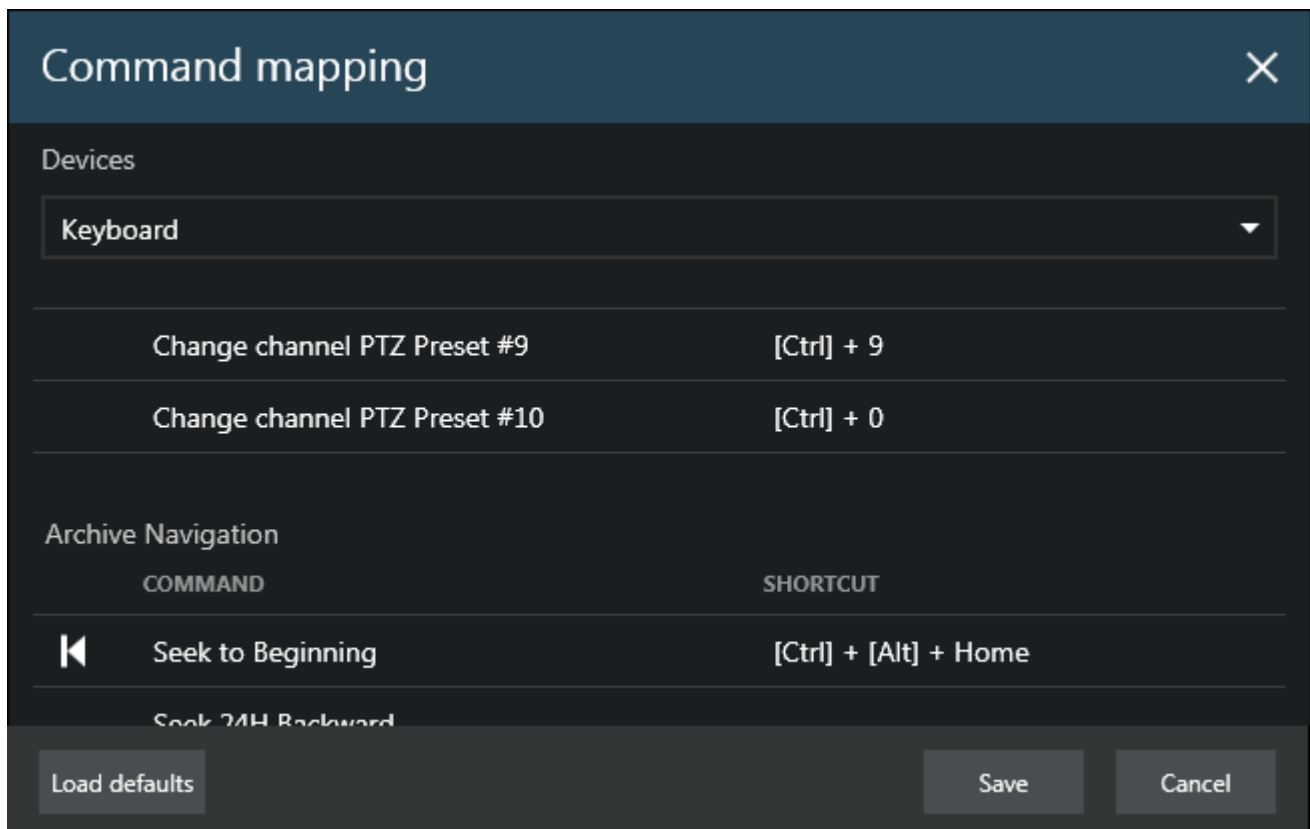
Luxriot EVO Monitor offers a set of keyboard shortcuts for most interface controls and operations, and also gives you the option to re-program every single key combination, allowing you to assign your own key combinations to every available operation (action). This is true not only for the standard computer keyboards, but also for PTZ keyboards and joystick controllers.


 The controller device should be DirectShow compatible in order to be recognized in Luxriot EVO Monitor.

All keyboards connected to the Luxriot EVO Monitor station are automatically detected and listed as available for shortcut configuration; the list of default shortcut mappings is also attached automatically, if it is available for the target controller. For PTZ keyboards, joystick functionality is not listed but it is implied that all joysticks have the same behaviour, which includes pan and tilt on X and Y axes and zoom on Z axis. If you wish to calibrate your joystick before using it in Luxriot EVO Monitor, please go to the Windows Control Panel and find your device under *Devices* (*Devices and Printers* section).

 The list of available commands is the same for each connected controller and cover most of the actions that can be performed in Luxriot EVO Monitor. Commands cannot be added to the list manually at user's will but it is likely that the list of the available programmable actions will be expanded based on the customer feedback.

In order to view and edit the shortcuts, go to the Luxriot EVO Monitor main menu -> *Edit* -> *Command mapping*.



Devices	
Keyboard	
Change channel PTZ Preset #9	[Ctrl] + 9
Change channel PTZ Preset #10	[Ctrl] + 0
Archive Navigation	
COMMAND	SHORTCUT
 Seek to Beginning	[Ctrl] + [Alt] + Home
Seek 24H Backward	

Load defaults Save Cancel

From the *Devices* drop-down list, choose the keyboard you wish to configure the shortcuts for; if your device is not in the list, make sure that it is connected to the server and that its driver has been installed correctly. Some devices, such as standard keyboards, have an extended pre-configured (default) set of command shortcuts covering almost all the available actions; generic ones have either no default configuration or shortcuts for calling first ten presets of a PTZ-capable camera.

In order to **change** shortcut mapping and replace it with your own key or key combination, simply double-click the target command and enter your desired key combination from the keyboard. A minimum of one and a maximum of four keys is expected for the standard keyboard, and a maximum of two keys - for PTZ keyboards or joysticks. If the entered key or key combination is already used somewhere else, you will be prompted to either confirm the new mapping or discard the changes and pick another shortcut.

Luxriot EVO Monitor User Guide

Use the *Load Defaults* button in the bottom-left-hand corner if you wish to discard all changes for the currently selected controller and load **default** configuration instead.

When you have finished with the shortcut configuration, click *Save* to **confirm** all changes and close the dialog box.

30 Operation Modes

Luxriot Monitor has three special operation modes:

- always on top
- exclusive (no access to other applications or resources)
- locked (all Luxriot Monitor controls are unavailable)

You can activate these by selecting the relevant option via main menu View -> [option].



In order to use these modes on **Windows 8, 8.1, 10** and **Windows Server 2012** - the operating systems having Windows Metro interface design - it is necessary to **disable** Windows Logon Screen. Without doing it, exclusivity mode and locked application mode can be **overridden** by using Windows button.

In order to do so, go to your Start menu and locate the following shortcuts under Luxriot EVO category:

- Disable Windows Logon Screen controls - this one will disable Windows interface elements, allowing you to use Luxriot Monitor operation modes properly
- Enable Windows Logon Screen controls - this one will enable Windows welcome screen back

After disabling the Windows Logon Screen controls, launch Luxriot Monitor and use application operation modes as required.

Exclusivity and locked modes require a password to be defined, and this can be set in Application settings. If you have not already set a new password, you will be prompted to do so upon enabling the exclusivity/locked mode.

31 External Services

External services in Luxriot EVO are, primarily, LPR (license Plate Recognition) and FR (Face Recognition) modules, as well as any system-specific third-party modules that have been integrated with Luxriot EVO. If additional external services have been enabled and set up for your server(s), these will allow you to receive live event streams for the corresponding channels and also to investigate the recorded event data together with the video streams.

The usage instructions in this user guide use the LPR external service as an example. All the other external analysis modules (e.g., facial recognition) are used in a similar way, taking into account that some service-specific element titles may differ.

Live

If recognition is running for a specific channel, you can see the recognition results by opening the *Notification Pane* for each individual channel. The pane can be toggled using the viewport [overlay controls](#), and its availability can be set up via [Application Settings](#).

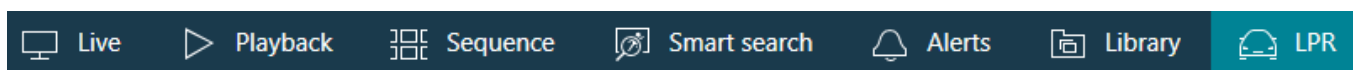


The list of the live results is cleared when you close the Luxriot EVO Monitor application meaning that each time Luxriot EVO Monitor starts with an empty notification pane and it gets filled as the recognition results arrive.

If your target channel is recorded, you can **double-click** any entry to see the moment of the recognition played back automatically in the same viewport using the [instant playback](#). The recording status is showed by the overlay icon in the bottom-left corner of the viewport (yellow = recording ON, white = OFF).

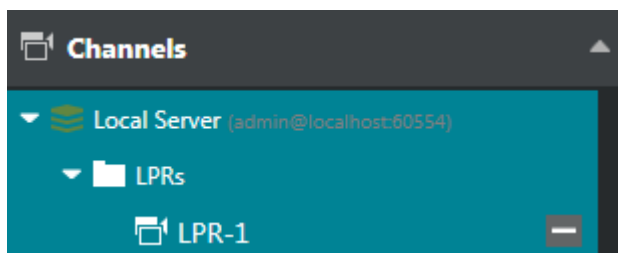
Investigation

For every external service type, a corresponding tab appears on the topmost panel of Luxriot EVO Monitor. Click your desired tab to proceed with the investigation.



Luxriot EVO Monitor User Guide

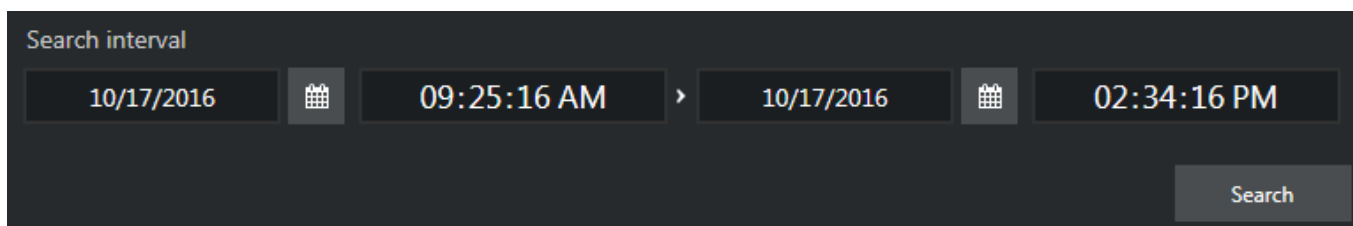
In order to start searching for the recognition results, you need to specify the target channels first. To do this, click the + next to the channel, service group or server name in the *Resources* pane; you can add multiple channels from different external service groups. Use the - next to the channel, group or server name to deselect and exclude it from the search.



Next, enter your keywords in the search field. For license plate recognition, you can enter either the whole plate number or a part of it and use asterisk (*) as a wildcard; for face recognition, enter the person's name or a part of the name.



Specify the target date and time range: the date can be either entered manually from the keyboard or selected using the calendar control; the time can be also either entered manually or adjusted using your mouse wheel after clicking the digits and holding your mouse cursor over the time element.



After that, click the *Search* button to view the results. Please note that, depending on the selected time range and number of channels, the search may take some time; the results will be listed in the central viewing area after they have been found. Do not press the *Search* button repeatedly: this will re-initiate the search process.

TIME	PLATE	CHANNEL
10/17/2016 2:33:09 PM	EL7722	LPR-1
10/17/2016 2:31:58 PM	EL7722	LPR-1
10/17/2016 2:30:46 PM	EL7722	LPR-1
10/17/2016 2:29:35 PM	EL7722	LPR-1
10/17/2016 2:28:25 PM	EL7722	LPR-1
10/17/2016 2:27:15 PM	EL7722	LPR-1

Double-click any specific search result and it will be opened in the right-hand-side area in the archive investigation mode, the recognition moment (plus some seconds before and after) being looped.

Luxriot EVO Monitor User Guide



The instant playback here has some standard Luxriot EVO Monitor controls and also an option to switch to the regular playback mode.

- Use the semi-transparent *Play* viewport overlay control in the centre of the picture to play faster, slower or pause the playback: simply drag the arrow to the left/right/centre position
- Timestamp in the upper-right-hand corner of the picture shows server time
- The small *Play* icon in the bottom-right-hand corner will take you to the *Playback* mode
- The *Clock* overlay control allows you to go to any particular moment in time in the same playback window
- The *Flag* icon will open the *Add new bookmark* dialog box, allowing you to add a bookmark to this specific moment
- Pressing the *Camera* icon will export a snapshot
- Pressing the *Video clip* icon will automatically export the piece of video, which is currently being played
- The timeline contains the recognition related time interval but you can also adjust the boundaries by clicking and dragging the arrows on the left and right sides of the timeline (minimal interval is ten seconds)

You can switch to other tabs while investigating and you can return to the exact place where you left off by switching back to the External Service tab, provided that you do not close the Luxriot EVO Monitor application. If you do, all your search results will be discarded.